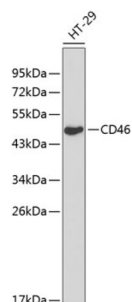


Membrane Cofactor Protein (CD46) Antibody

Catalogue No.: abx001390



Western blot analysis of extracts of HT-29 cells using CD46 Antibody (1/1000 dilution).

CD46 Antibody is a Rabbit Polyclonal antibody against CD46. CD46 is a type I membrane protein and a regulatory part of the complement system. This protein has cofactor activity for inactivation of complement components C3b and C4b by serum factor I, which protects the host cell from damage by complement. In addition, CD46 can act as a receptor for the Edmonston strain of measles virus, human herpesvirus-6, and type IV pili of pathogenic *Neisseria*. Finally, this protein may be involved in the fusion of the spermatozoa with the oocyte during fertilization. CD46 is found in a cluster on chromosome 1q32 with other proteins that are structural components of the complement system. Entrez Gene: gene-centered information at NCBI. Nucleic Acids Res. 2005 Jan 1;33:D54-8.

Target: Membrane Cofactor Protein (CD46)

Clonality: Polyclonal

Reactivity: Human

Tested Applications: WB

Host: Rabbit

Recommended dilutions: WB: 1/500 - 1/2000. Optimal dilutions/concentrations should be determined by the end user.

Conjugation: Unconjugated

Immunogen: Recombinant fusion protein corresponding to human CD46

Isotype: IgG

Form: Liquid

Purification: Purified by affinity chromatography.

Storage: Aliquot and store at -20°C. Avoid repeated freeze/thaw cycles.

UniProt Primary AC: P15529 ([UniProt](#), [ExPASy](#))

Datasheet

Version: 3.0.0

Revision date: 05 Jul 2025



Gene Symbol: CD46

GeneID: [4179](#)

NCBI Accession: NP_722548.1

KEGG: hsa:4179

String: [9606.ENSP00000313875](#)

Molecular Weight: Calculated MW: 36 kDa/39 kDa/40 kDa/41 kDa/42 kDa/43 kDa/44 kDa
Observed MW: 44 kDa

Buffer: PBS, pH 7.3, containing 0.02% sodium azide, 50% glycerol.

Concentration: 1 mg/ml

Note: THIS PRODUCT IS FOR RESEARCH USE ONLY. NOT FOR USE IN DIAGNOSTIC, THERAPEUTIC OR COSMETIC PROCEDURES. NOT FOR HUMAN OR ANIMAL CONSUMPTION.

For Reference Only