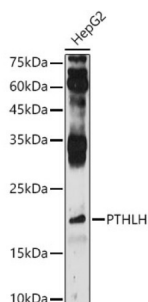


Parathyroid Hormone-Related Protein / PTHrP (PTHLH) Antibody

Catalogue No.: abx001391



Western blot analysis of lysates from HepG2 cells, using PTHLH Antibody at 1/500 dilution. Secondary antibody: HRP-conjugated Goat anti-Rabbit IgG (H+L) at 1/10000 dilution. Lysates/proteins: 25 µg per lane. Blocking buffer: 3% nonfat dry milk in TBST. Exposure time: 180s.

PTHLH Antibody is a Rabbit Polyclonal antibody against PTHLH. The protein encoded by this gene is a member of the parathyroid hormone family. This hormone regulates endochondral bone development and epithelial-mesenchymal interactions during the formation of the mammary glands and teeth. This hormone is involved in lactation possibly by regulating the mobilization and transfer of calcium to the milk. The receptor of this hormone, PTHR1, is responsible for most cases of humoral hypercalcemia of malignancy. Four alternatively spliced transcript variants encoding two distinct isoforms have been observed. There is also evidence for alternative translation initiation from non-AUG (CUG and GUG) start sites, in-frame and downstream of the initiator AUG codon, to give rise to nuclear forms of this hormone. [provided by RefSeq, Jul 2008].

| | |
|-------------------------------|---|
| Target: | Parathyroid Hormone-Related Protein / PTHrP (PTHLH) |
| Clonality: | Polyclonal |
| Reactivity: | Human, Mouse, Rat |
| Tested Applications: | ELISA, WB |
| Host: | Rabbit |
| Recommended dilutions: | ELISA: 1 µg/ml, WB: 1/100 - 1/500. Optimal dilutions/concentrations should be determined by the end user. |
| Conjugation: | Unconjugated |
| Immunogen: | Recombinant fusion protein containing a sequence corresponding to amino acids 25-175 of human PTHLH. |
| Isotype: | IgG |
| Form: | Liquid |
| Purification: | Purified by affinity chromatography. |
| Storage: | Aliquot and store at -20°C. Avoid repeated freeze/thaw cycles. |

Datasheet

Version: 3.0.0
Revision date: 21 Jun 2025



UniProt Primary AC: P12272 ([UniProt](#), [ExPASy](#))

Gene Symbol: PTHLH

GeneID: [5744](#)

OMIM: [168470](#)

NCBI Accession: NP_945315.1

HGNC: 9607

KEGG: hsa:5744

Ensembl: ENSG00000087494

Molecular Weight: Calculated MW: 20 kDa
Observed MW: 20 kDa

Buffer: PBS, pH 7.3, containing 0.02% sodium azide, 50% glycerol.

Concentration: 1.4 mg/ml

Note: THIS PRODUCT IS FOR RESEARCH USE ONLY. NOT FOR USE IN DIAGNOSTIC, THERAPEUTIC OR COSMETIC PROCEDURES. NOT FOR HUMAN OR ANIMAL CONSUMPTION.