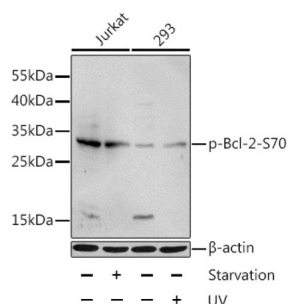
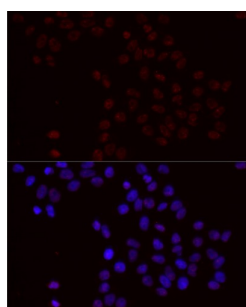


## Bcl2 (pS70) Antibody

Catalogue No.: abx123324



Western blot analysis of lysates from Jurkat and 293 cells, using Phospho-Bcl-2-S70 Antibody at 1/1000 dilution. Jurkat cells were treated by serum-starvation overnight. 293 cells were treated by UV for 15-30 minutes. Secondary antibody: HRP-conjugated Goat anti-Rabbit IgG (H+L) at 1/10000 dilution. Lysates/proteins: 25 µg per lane. Blocking buffer: 3% BSA.



Immunofluorescence analysis of HeLa cells using Phospho-Bcl-2-S70 Antibody at dilution of 1/100 (40x lens). Secondary antibody: Cy3-conjugated Goat anti-Rabbit IgG (H+L) at 1/500 dilution. Blue: DAPI for nuclear staining.

Bcl2 (pS70) Antibody is a Rabbit Polyclonal Antibody against Bcl2 (pS70).

**Target:** Bcl2 (pS70)

**Clonality:** Polyclonal

**Modification:** Phosphorylation

**Reactivity:** Human, Rat

**Tested Applications:** ELISA, WB, IF/ICC

**Host:** Rabbit

**Recommended dilutions:** ELISA: 1 µg/ml, WB: 1/500 - 1/2000, IF/ICC: 1/50 - 1/200. Optimal dilutions/concentrations should be determined by the end user.

**Conjugation:** Unconjugated

**Immunogen:** Synthetic peptide corresponding to Bcl2 (pS70). The exact sequence is proprietary.

**Isotype:** IgG

**Form:** Liquid

# Datasheet

Version: 3.0.0  
Revision date: 15 Jul 2025



<b>Purification:</b>	Purified by affinity chromatography.
<b>Storage:</b>	Aliquot and store at -20°C. Avoid repeated freeze/thaw cycles.
<b>UniProt Primary AC:</b>	P10415 ( <a href="#">UniProt</a> , <a href="#">ExPASy</a> )
<b>Gene Symbol:</b>	BCL2
<b>GeneID:</b>	<a href="#">596</a>
<b>NCBI Accession:</b>	NP_000624.2
<b>KEGG:</b>	hsa:596
<b>String:</b>	<a href="#">9606.ENSP00000381185</a>
<b>Molecular Weight:</b>	Calculated MW: 26 kDa Observed MW: 28 kDa
<b>Buffer:</b>	PBS, pH 7.3, containing 0.02% sodium azide, 50% glycerol.
<b>Concentration:</b>	> 0.2 mg/ml
<b>Note:</b>	THIS PRODUCT IS FOR RESEARCH USE ONLY. NOT FOR USE IN DIAGNOSTIC, THERAPEUTIC OR COSMETIC PROCEDURES. NOT FOR HUMAN OR ANIMAL CONSUMPTION.