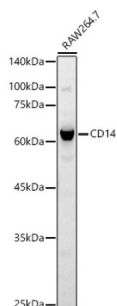
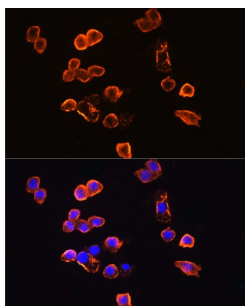


## Cluster Of Differentiation 14 (CD14) Antibody

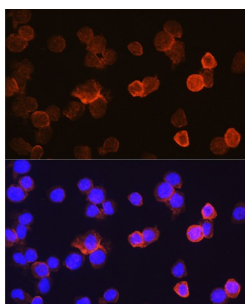
Catalogue No.: abx006311



Western blot analysis of lysates from RAW264.7 cells, using CD14 Antibody at 1/600 dilution. Secondary antibody: HRP-conjugated Goat anti-Rabbit IgG (H+L) at 1/10000 dilution. Lysates/proteins: 25 µg per lane. Blocking buffer: 3% nonfat dry milk in TBST. Exposure time: 30s.



Immunofluorescence analysis of RAW264.7 cells using CD14 Antibody at dilution of 1/100. Blue: DAPI for nuclear staining.



Immunofluorescence analysis of THP-1 cells using CD14 Antibody at dilution of 1/100. Blue: DAPI for nuclear staining.

CD14 Antibody is a Rabbit Polyclonal Antibody against CD14.

**Target:** Cluster Of Differentiation 14 (CD14)

**Clonality:** Polyclonal

**Reactivity:** Human, Mouse, Rat

**Tested Applications:** ELISA, WB, IF/ICC

**Host:** Rabbit

**Recommended dilutions:** ELISA: 1 µg/ml, WB: 1/500 - 1/1000, IF/ICC: 1/50 - 1/200. Optimal dilutions/concentrations should be determined by the end user.

**Conjugation:** Unconjugated

# Datasheet

Version: 4.0.0  
Revision date: 21 Aug 2025



<b>Immunogen:</b>	Recombinant protein corresponding to CD14. The exact sequence is proprietary.
<b>Isotype:</b>	IgG
<b>Form:</b>	Liquid
<b>Purification:</b>	Purified by affinity chromatography.
<b>Storage:</b>	Aliquot and store at -20°C. Avoid repeated freeze/thaw cycles.
<b>UniProt Primary AC:</b>	P08571 ( <a href="#">UniProt</a> , <a href="#">ExPASy</a> )
<b>Gene Symbol:</b>	CD14
<b>GeneID:</b>	<a href="#">929</a>
<b>NCBI Accession:</b>	NP_000582.1
<b>KEGG:</b>	hsa:929
<b>String:</b>	<a href="#">9606.ENSP00000304236</a>
<b>Molecular Weight:</b>	Calculated MW: 40 kDa Observed MW: 60 kDa
<b>Buffer:</b>	PBS, pH 7.3, containing 0.05% Proclin-300, 50% glycerol.
<b>Concentration:</b>	> 0.2 mg/ml
<b>Note:</b>	THIS PRODUCT IS FOR RESEARCH USE ONLY. NOT FOR USE IN DIAGNOSTIC, THERAPEUTIC OR COSMETIC PROCEDURES. NOT FOR HUMAN OR ANIMAL CONSUMPTION.