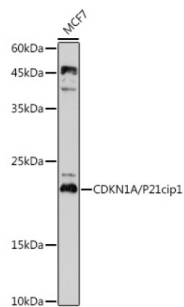
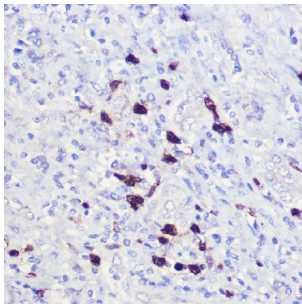


Cyclin Dependent Kinase Inhibitor 1A (CDKN1A) Antibody

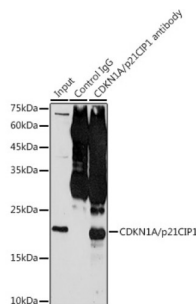
Catalogue No.: abx123507



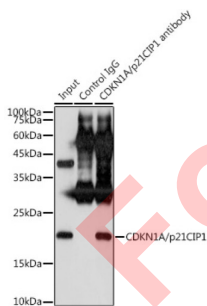
Western blot analysis of extracts of MCF7 cells using CDKN1A/P21cip1 Antibody (1/1000 dilution).



Immunohistochemistry of paraffin-embedded human liver using CDKN1A/p21CIP1 Antibody (1/100 dilution, 40x lens). High pressure antigen retrieval was performed in 10 mM citrate buffer pH 6.0 before commencing with IHC staining protocol.



Immunoprecipitation analysis of extracts of MCF7 cells (300 µg) using 3 µg CDKN1A/p21CIP1 Antibody (3 µg). Western blot was performed from the immunoprecipitate using CDKN1A/p21CIP1 Antibody (1/500 dilution).



Immunoprecipitation analysis of extracts of MCF7 cells (300 µg) using CDKN1A/p21CIP1 Antibody (3 µg). Western blot was performed from the immunoprecipitate using CDKN1A/p21CIP1 Antibody (1/500 dilution).

CDKN1A Antibody is a Rabbit Polyclonal Antibody against CDKN1A.

Target: Cyclin Dependent Kinase Inhibitor 1A (CDKN1A)

Clonality: Polyclonal

Reactivity: Human

Datasheet

Version: 4.0.0
Revision date: 25 May 2025



Tested Applications:	WB, IHC, IP
Host:	Rabbit
Recommended dilutions:	WB: 1/500 - 1/2000, IHC-P: 1/50 - 1/100, IP: 1/50 - 1/200. Not tested in IHC-F. Optimal dilutions/concentrations should be determined by the end user.
Conjugation:	Unconjugated
Immunogen:	Recombinant fusion protein corresponding to human CDKN1A/p21CIP1
Isotype:	IgG
Form:	Liquid
Purification:	Purified by affinity chromatography.
Storage:	Aliquot and store at -20°C. Avoid repeated freeze/thaw cycles.
UniProt Primary AC:	P38936 (UniProt , ExPASy)
Gene Symbol:	CDKN1A
GeneID:	1026
NCBI Accession:	NP_000380.1
Molecular Weight:	Calculated MW: 18 kDa
Buffer:	PBS, pH 7.3, containing 0.05% Proclin-300, 50% glycerol.
Concentration:	1 mg/ml
Note:	THIS PRODUCT IS FOR RESEARCH USE ONLY. NOT FOR USE IN DIAGNOSTIC, THERAPEUTIC OR COSMETIC PROCEDURES. NOT FOR HUMAN OR ANIMAL CONSUMPTION.