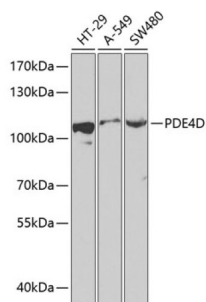


## Phosphodiesterase 4D, cAMP Specific (PDE4D) Antibody

Catalogue No.: abx001394



Western blot analysis of extracts of various cell lines using PDE4D Antibody (1/1000 dilution).

PDE4D Antibody is a Rabbit Polyclonal antibody against PDE4D. PDE4D(cAMP-specific 3',5'-cyclic phosphodiesterase 4D) is also named as DPDE3, PDE43 and belongs to the cyclic nucleotide phosphodiesterase family and PDE4 subfamily. PDE4D subtype may be of particular importance as an antidepressant target in that it is regulated by repeated treatment with both norepinephrine and serotonin reuptake inhibitors as well as by the PDE4 inhibitor rolipram(PMID:16730340). It has at least 9 isoforms and all 9 PDE4D isoforms are expressed in healthy adult human hippocampus and in hippocampus from a patient with advanced Alzheimer disease(PMID:17353396). This antibody is specific to PDE4D.

|                               |  |
|-------------------------------|--|
| <b>Target:</b>                | Phosphodiesterase 4D, cAMP Specific (PDE4D)  |
| <b>Clonality:</b>             | Polyclonal   |
| <b>Reactivity:</b>            | Human, Rat   |
| <b>Tested Applications:</b>   | WB   |
| <b>Host:</b>                  | Rabbit   |
| <b>Recommended dilutions:</b> | WB: 1/500 - 1/2000. Optimal dilutions/concentrations should be determined by the end user. |
| <b>Conjugation:</b>           | Unconjugated   |
| <b>Immunogen:</b>             | Recombinant fusion protein corresponding to human PDE4D                                    |
| <b>Isotype:</b>               | IgG  |
| <b>Form:</b>                  | Liquid   |
| <b>Purification:</b>          | Purified by affinity chromatography.   |
| <b>Storage:</b>               | Aliquot and store at -20°C. Avoid repeated freeze/thaw cycles.                             |
| <b>UniProt Primary AC:</b>    | Q08499 ( <a href="#">UniProt</a> , <a href="#">ExPASy</a> )                                |

# Datasheet

Version: 4.0.0  
Revision date: 20 Jun 2025



**Gene Symbol:** PDE4D

**GeneID:** [5144](#)

**NCBI Accession:** NP\_001184152.1

**KEGG:** hsa:5144

**String:** [9606.ENSP00000345502](#)

**Molecular Weight:** Calculated MW: 23-24 kDa/57-91 kDa  
Observed MW: 110 kDa

**Buffer:** PBS, pH 7.3, containing 0.02% sodium azide, 50% glycerol.

**Concentration:** 1 mg/ml

**Note:** THIS PRODUCT IS FOR RESEARCH USE ONLY. NOT FOR USE IN DIAGNOSTIC, THERAPEUTIC OR COSMETIC PROCEDURES. NOT FOR HUMAN OR ANIMAL CONSUMPTION.

For Reference Only