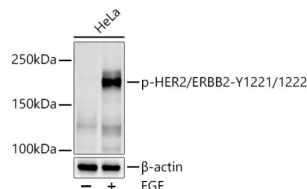


ERBB2 (pY1221 / 1222) Antibody

Catalogue No.: abx123300



Western blot analysis of lysates from HeLa cells, using Phospho-HER2/ErbB2-Y1221/1222 Antibody at 1/1000 dilution. HeLa cells were treated by EGF (100 ng/ml) at 37 °C for 30 minutes after serum-starvation overnight. Secondary antibody: HRP-conjugated Goat anti-Rabbit IgG (H+L) at 1/10000 dilution. Lysates/proteins: 25 µg per lane. Blocking buffer: 3% nonfat dry milk in TBST. Exposure time: 30s.

ERBB2 (pY1221/1222) Antibody is a Rabbit Polyclonal Antibody against ERBB2 (pY1221/1222).

Target:	ERBB2 (pY1221/1222)
Clonality:	Polyclonal
Modification:	Phosphorylation
Reactivity:	Human
Tested Applications:	ELISA, WB
Host:	Rabbit
Recommended dilutions:	ELISA: 1 µg/ml, WB: 1/500 - 1/1000. Optimal dilutions/concentrations should be determined by the end user.
Conjugation:	Unconjugated
Immunogen:	A synthetic phosphorylated peptide around Y1221 & Y1222 of human HER2/ERBB2.
Isotype:	IgG
Form:	Liquid
Purification:	Purified by affinity chromatography.
Storage:	Aliquot and store at -20°C. Avoid repeated freeze/thaw cycles.
UniProt Primary AC:	P04626 (UniProt , ExPASy)
Gene Symbol:	ERBB2

Datasheet

Version: 5.0.0

Revision date: 04 Jul 2025



GeneID: [2064](#)

NCBI Accession: NP_004439.2

KEGG: hsa:2064

String: [9606.ENSP00000269571](#)

Molecular Weight: Calculated MW: 138 kDa
Observed MW: 185 kDa

Buffer: PBS, pH 7.3, containing 0.05% Proclin-300, 50% glycerol.

Concentration: > 0.2 mg/ml

Note: THIS PRODUCT IS FOR RESEARCH USE ONLY. NOT FOR USE IN DIAGNOSTIC, THERAPEUTIC OR COSMETIC PROCEDURES. NOT FOR HUMAN OR ANIMAL CONSUMPTION.

For Reference Only