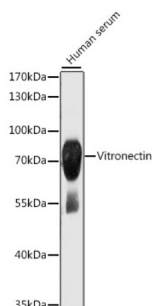


Vitronectin (VTN) Antibody

Catalogue No.: abx001401



Western blot analysis of extracts of human serum using Vitronectin Antibody (1/1000 dilution).

VTN Antibody is a Rabbit Polyclonal antibody against VTN. The protein encoded by this gene is a member of the pexin family. It is found in serum and tissues and promotes cell adhesion and spreading, inhibits the membrane-damaging effect of the terminal cytolytic complement pathway, and binds to several serpin serine protease inhibitors. It is a secreted protein and exists in either a single chain form or a clipped, two chain form held together by a disulfide bond. [provided by RefSeq, Jul 2008].

Target: Vitronectin (VTN)

Clonality: Polyclonal

Reactivity: Human

Tested Applications: WB

Host: Rabbit

Recommended dilutions: WB: 1/500 - 1/2000. Optimal dilutions/concentrations should be determined by the end user.

Conjugation: Unconjugated

Immunogen: Recombinant fusion protein corresponding to human VTN

Isotype: IgG

Form: Liquid

Purification: Purified by affinity chromatography.

Storage: Aliquot and store at -20°C. Avoid repeated freeze/thaw cycles.

UniProt Primary AC: P04004 ([UniProt](#), [ExPASy](#))

Gene Symbol: VTN

Datasheet

Version: 4.0.0

Revision date: 01 Sep 2025



GeneID: [7448](#)

NCBI Accession: NP_000629.3

KEGG: hsa:7448

String: [9606.ENSP00000226218](#)

Molecular Weight: Calculated MW: 54 kDa
Observed MW: 70 kDa

Buffer: PBS, pH 7.3, containing 0.02% sodium azide, 50% glycerol.

Concentration: 1 mg/ml

Note: THIS PRODUCT IS FOR RESEARCH USE ONLY. NOT FOR USE IN DIAGNOSTIC, THERAPEUTIC OR COSMETIC PROCEDURES. NOT FOR HUMAN OR ANIMAL CONSUMPTION.

For Reference Only