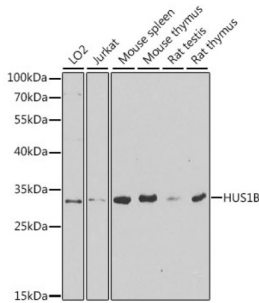


Checkpoint Protein HUS1B (HUS1B) Antibody

Catalogue No.: abx006000



Western blot analysis of extracts of various cell lines using HUS1B Antibody (1/1000 dilution).

HUS1B Antibody is a Rabbit Polyclonal Antibody against HUS1B.

Target: Checkpoint Protein HUS1B (HUS1B)**Clonality:** Polyclonal**Reactivity:** Human, Mouse, Rat**Tested Applications:** WB**Host:** Rabbit**Recommended dilutions:** WB: 1/500 - 1/2000. Optimal dilutions/concentrations should be determined by the end user.**Conjugation:** Unconjugated**Immunogen:** Recombinant fusion protein corresponding to human HUS1B**Isotype:** IgG**Form:** Liquid**Purification:** Purified by affinity chromatography.**Storage:** Aliquot and store at -20°C. Avoid repeated freeze/thaw cycles.**UniProt Primary AC:** Q8NH55 ([UniProt](#), [ExPASy](#))**Gene Symbol:** HUS1B**GeneID:** [135458](#)

Datasheet

Version: 5.0.0
Revision date: 05 Nov 2025



NCBI Accession: NP_683762.2

KEGG: hsa:135458

String: [9606.ENSP00000370293](#)

Molecular Weight: Calculated MW: 30 kDa
Observed MW: 31 kDa

Buffer: PBS, pH 7.3, containing 0.02% sodium azide, 50% glycerol.

Concentration: 1 mg/ml

Note: THIS PRODUCT IS FOR RESEARCH USE ONLY. NOT FOR USE IN DIAGNOSTIC, THERAPEUTIC OR COSMETIC PROCEDURES. NOT FOR HUMAN OR ANIMAL CONSUMPTION.

For Reference Only