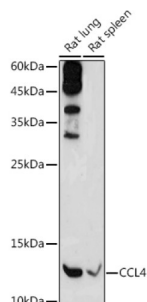


## C-C Motif Chemokine 4 (CCL4) Antibody

Catalogue No.: abx001404



Western blot analysis of extracts of various cell lines using CCL4 Antibody (1/1000 dilution).

CCL4 Antibody is a Rabbit Polyclonal antibody against CCL4. Chemokines are members of a superfamily of small inducible, secreted, pro-inflammatory cytokines. Members of the chemokine family exhibit 20 to 50% homology in their predicted amino acid sequences and are divided into four subfamilies. In C-C (or b) subfamily, the first two cysteines are adjacent. C-C chemokines are chemoattractants and activators for monocytes and T cells. C-C subfamily members include macrophage inflammatory protein (MIP)-1 $\alpha$ , MIP-1 $\beta$ , MIP-2, MIP-3 $\alpha$ , MIP-3 $\beta$ , MIP-4, HCC-1, MIP-5 (or HCC-2), RANTES, MCP-1/2/3 (and the murine homologs JE and MARC), I-309, murine C10 and TCA3. Research has shown that MIP-1 $\beta$  is more selective than MIP-1 $\alpha$ , primarily attracting CD4<sup>+</sup> T lymphocytes, with a preference for T cells of the naive phenotype. MIP-1 $\alpha$  is a more potent lymphocyte chemoattractant than MIP-1 $\beta$  and exhibits a broader range of chemoattractant specificities. It has been suggested that CD8<sup>+</sup> T lymphocytes are involved in the control of HIV infection *in vivo* by the release of HIV-suppressive factors (HIV-SF). MIP-1 $\alpha$  has been identified as one of the major HIV-SFs produced by CD8<sup>+</sup> T cells, along with MIP-1 $\beta$  and RANTES. Recombinant human MIP-1 $\alpha$  acts as an inhibitor of different strains of HIV-1, HIV-2 and SIV infection in a dose-dependent manner.

**Target:** C-C Motif Chemokine 4 (CCL4)

**Research Area:** Immunology, Infection Immunity

**Clonality:** Polyclonal

**Reactivity:** Rat

**Tested Applications:** WB

**Host:** Rabbit

**Recommended dilutions:** WB: 1/500 - 1/2000. Optimal dilutions/concentrations should be determined by the end user.

**Conjugation:** Unconjugated

**Immunogen:** A synthetic peptide corresponding to human CCL4

**Isotype:** IgG

**Form:** Liquid

# Datasheet

Version: 4.0.0  
Revision date: 14 Jun 2025



<b>Purification:</b>	Purified by affinity chromatography.
<b>Storage:</b>	Aliquot and store at -20°C. Avoid repeated freeze/thaw cycles.
<b>UniProt Primary AC:</b>	P13236 ( <a href="#">UniProt</a> , <a href="#">ExPASy</a> )
<b>Gene Symbol:</b>	CCL4
<b>GeneID:</b>	<a href="#">6351</a>
<b>NCBI Accession:</b>	NP_002975.1
<b>KEGG:</b>	hsa:388372, hsa:6351
<b>String:</b>	<a href="#">9606.ENSP00000482259</a>
<b>Molecular Weight:</b>	Calculated MW: 10 kDa Observed MW: 12 kDa
<b>Buffer:</b>	PBS, pH 7.3, containing 0.05% Proclin-300, 50% glycerol.
<b>Concentration:</b>	1 mg/ml
<b>Note:</b>	THIS PRODUCT IS FOR RESEARCH USE ONLY. NOT FOR USE IN DIAGNOSTIC, THERAPEUTIC OR COSMETIC PROCEDURES. NOT FOR HUMAN OR ANIMAL CONSUMPTION.