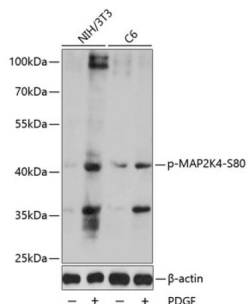


## MAP2K4 (pS80) Antibody

Catalogue No.: abx123382



Western blot analysis of lysates from NIH/3T3 and C6 cells, using Phospho-MAP2K4-S80 Antibody at 1/1000 dilution. NIH/3T3 cells were treated by PDGF (100ng/ml) for 30 minutes after serum-starvation overnight or treated by PDGF (50 ng/ml) for 30 minutes after serum-starvation overnight. Secondary antibody: HRP-conjugated Goat anti-Rabbit IgG (H+L) at 1/10000 dilution. Lysates/proteins: 25 µg per lane. Blocking buffer: 3% BSA. Exposure time: 150s.

MAP2K4 (pS80) Antibody is a Rabbit Polyclonal Antibody against MAP2K4 (pS80).

<b>Target:</b>	MAP2K4 (pS80)
<b>Clonality:</b>	Polyclonal
<b>Modification:</b>	Phosphorylation
<b>Reactivity:</b>	Human, Mouse, Rat
<b>Tested Applications:</b>	ELISA, WB
<b>Host:</b>	Rabbit
<b>Recommended dilutions:</b>	ELISA: 1 µg/ml, WB: 1/500 - 1/2000. Optimal dilutions/concentrations should be determined by the end user.
<b>Conjugation:</b>	Unconjugated
<b>Immunogen:</b>	A synthetic phosphorylated peptide around S80 of human MAP2K4.
<b>Isotype:</b>	IgG
<b>Form:</b>	Liquid
<b>Purification:</b>	Purified by affinity chromatography.
<b>Storage:</b>	Aliquot and store at -20°C. Avoid repeated freeze/thaw cycles.
<b>UniProt Primary AC:</b>	P45985 ( <a href="#">UniProt</a> , <a href="#">ExPASy</a> )
<b>Gene Symbol:</b>	MAP2K4

# Datasheet

Version: 3.0.0

Revision date: 21 Jun 2025



**GeneID:** [6416](#)

**NCBI Accession:** NP\_003001.1

**KEGG:** hsa:6416

**String:** [9606.ENSP00000410402](#)

**Molecular Weight:** Calculated MW: 44 kDa  
Observed MW: 44 kDa

**Buffer:** PBS, pH 7.3, containing 0.02% sodium azide, 50% glycerol.

**Concentration:** > 0.2 mg/ml

**Note:** THIS PRODUCT IS FOR RESEARCH USE ONLY. NOT FOR USE IN DIAGNOSTIC, THERAPEUTIC OR COSMETIC PROCEDURES. NOT FOR HUMAN OR ANIMAL CONSUMPTION.

For Reference Only