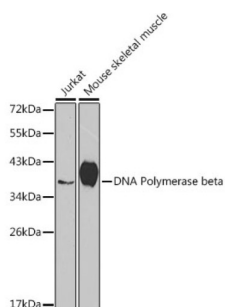
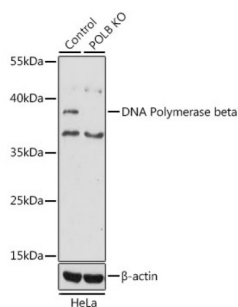


Polymerase DNA Directed Beta (POLB) Antibody

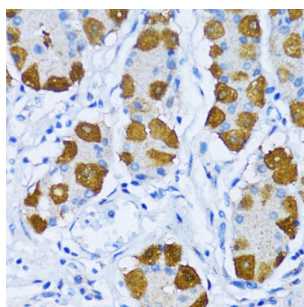
Catalogue No.: abx001412



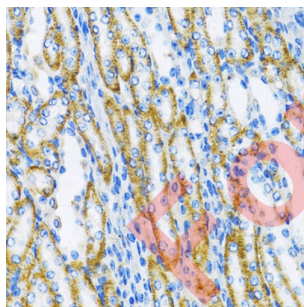
Western blot analysis of various lysates using [KO Validated] DNA Polymerase beta Antibody at 1/1000 dilution. Secondary antibody: HRP-conjugated Goat anti-Rabbit IgG (H+L) at 1/10000 dilution. Lysates/proteins: 25 µg per lane. Blocking buffer: 3% nonfat dry milk in TBST.



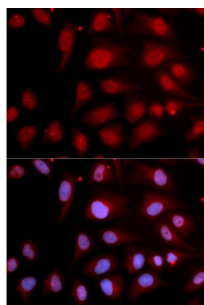
Western blot analysis of lysates from wild type (WT) and DNA Polymerase beta knockout (KO) HeLa cells, using [KO Validated] DNA Polymerase beta Antibody at 1/1000 dilution. Secondary antibody: HRP-conjugated Goat anti-Rabbit IgG (H+L) at 1/10000 dilution. Lysates/proteins: 25 µg per lane. Blocking buffer: 3% nonfat dry milk in TBST. Exposure time: 30s.



Immunohistochemistry analysis of paraffin-embedded Human stomach using [KO Validated] DNA Polymerase beta Antibody at dilution of 1/100 (40x lens). Microwave antigen retrieval performed in 0.01 M PBS Buffer (pH 7.2) prior to IHC staining.



Immunohistochemistry analysis of paraffin-embedded Mouse kidney using [KO Validated] DNA Polymerase beta Antibody at dilution of 1/100 (40x lens). Microwave antigen retrieval performed in 0.01 M PBS Buffer (pH 7.2) prior to IHC staining.



Immunofluorescence analysis of U2OS cells using [KO Validated] DNA Polymerase beta Antibody. Secondary antibody: Cy3-conjugated Goat anti-Rabbit IgG (H+L) at 1/500 dilution. Blue: DAPI for nuclear staining.

Datasheet

Version: 4.0.0
Revision date: 11 Jun 2025



POLB Antibody is a Rabbit Polyclonal antibody against POLB. The protein encoded by this gene is a DNA polymerase involved in base excision and repair, also called gap-filling DNA synthesis. The encoded protein, acting as a monomer, is normally found in the cytoplasm, but it translocates to the nucleus upon DNA damage. Several transcript variants of this gene exist, but the full-length nature of only one has been described to date. [provided by RefSeq, Sep 2011].

Target:	Polymerase DNA Directed Beta (POLB)
Clonality:	Polyclonal
Reactivity:	Human, Mouse
Tested Applications:	ELISA, WB, IHC, IF/ICC
Host:	Rabbit
Recommended dilutions:	ELISA: 1 µg/ml, WB: 1/200 - 1/1000, IHC-P: 1/50 - 1/200, IF/ICC: 1/20 - 1/200. Not tested in IHC-F. Optimal dilutions/concentrations should be determined by the end user.
Conjugation:	Unconjugated
Immunogen:	Recombinant fusion protein containing a sequence corresponding to amino acids 1-335 of human DNA Polymerase beta.
Isotype:	IgG
Form:	Liquid
Purification:	Purified by affinity chromatography.
Storage:	Aliquot and store at -20°C. Avoid repeated freeze/thaw cycles.
UniProt Primary AC:	P06746 (UniProt , ExPASy)
Gene Symbol:	POLB
GeneID:	5423
NCBI Accession:	NP_002681.1
KEGG:	hsa:5423
String:	9606.ENSP00000265421
Molecular Weight:	Calculated MW: 38 kDa Observed MW: 37 kDa
Buffer:	PBS, pH 7.3, containing 0.02% sodium azide, 50% glycerol.

Datasheet

Version: 4.0.0

Revision date: 11 Jun 2025



Concentration: > 0.2 mg/ml

Note: THIS PRODUCT IS FOR RESEARCH USE ONLY. NOT FOR USE IN DIAGNOSTIC, THERAPEUTIC OR COSMETIC PROCEDURES. NOT FOR HUMAN OR ANIMAL CONSUMPTION.

For Reference Only