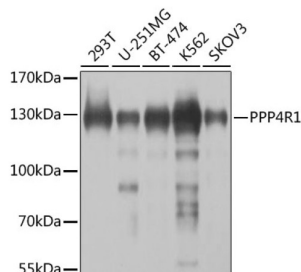
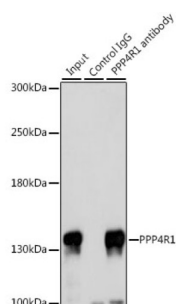


Serine/threonine-Protein Phosphatase 4 Regulatory Subunit 1 (PPP4R1) Antibody

Catalogue No.: abx005916



Western blot analysis of various lysates using PPP4R1 Antibody at 1/1000 dilution. Secondary antibody: HRP-conjugated Goat anti-Rabbit IgG (H+L) at 1/10000 dilution. Lysates/proteins: 25 µg per lane. Blocking buffer: 3% nonfat dry milk in TBST. Exposure time: 5s.



Immunoprecipitation analysis of 200 µg extracts of 293T cells, using 3 µg PPP4R1 antibody. Western blot was performed from the immunoprecipitate using PPP4R1 antibody at a dilution of 1/1000.

PPP4R1 Antibody is a Rabbit Polyclonal Antibody against PPP4R1.

Target: Serine/threonine-Protein Phosphatase 4 Regulatory Subunit 1 (PPP4R1)

Clonality: Polyclonal

Reactivity: Human, Mouse

Tested Applications: ELISA, WB, IP

Host: Rabbit

Recommended dilutions: ELISA: 1 µg/ml, WB: 1/500 - 1/2000, IP: 0.5 µg - 4 µg antibody per 200 µg - 400 µg extracts of whole cells. Optimal dilutions/concentrations should be determined by the end user.

Conjugation: Unconjugated

Immunogen: Recombinant protein corresponding to PPP4R1. The exact sequence is proprietary.

Isotype: IgG

Form: Liquid

Datasheet

Version: 4.0.0
Revision date: 15 Aug 2025



Purification:	Purified by affinity chromatography.
Storage:	Aliquot and store at -20°C. Avoid repeated freeze/thaw cycles.
UniProt Primary AC:	Q8TF05 (UniProt , ExPASy)
Gene Symbol:	PPP4R1
GeneID:	9989
NCBI Accession:	NP_001035847.1
KEGG:	hsa:9989
String:	9606.ENSP00000383402
Molecular Weight:	Calculated MW: 107 kDa Observed MW: 130 kDa
Buffer:	PBS, pH 7.3, containing 0.02% sodium azide, 50% glycerol.
Concentration:	> 0.2 mg/ml
Note:	THIS PRODUCT IS FOR RESEARCH USE ONLY. NOT FOR USE IN DIAGNOSTIC, THERAPEUTIC OR COSMETIC PROCEDURES. NOT FOR HUMAN OR ANIMAL CONSUMPTION.