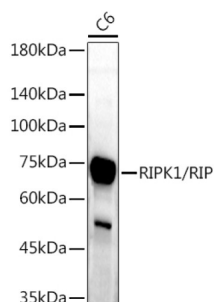
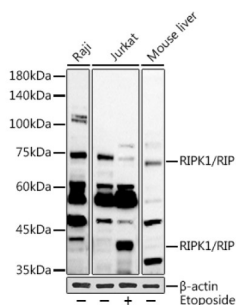


## Receptor Interacting Serine Threonine Kinase 1 (RIPK1) Antibody

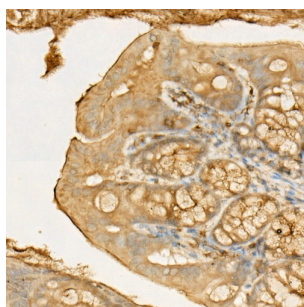
Catalogue No.: abx007191



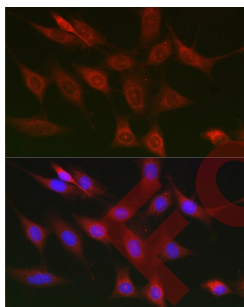
Western blot analysis of lysates from C6 cells, using RIPK1/RIP Antibody at 1/1000 dilution. Secondary antibody: HRP-conjugated Goat anti-Rabbit IgG (H+L) at 1/10000 dilution. Lysates/proteins: 25 µg per lane. Blocking buffer: 3% nonfat dry milk in TBST. Exposure time: 180s.



Western blot analysis of various lysates using RIPK1/RIP Antibody at 1/1000 dilution. Jurkat cells were treated by Etoposide (25 uM) at 37 °C for 5 hours. Secondary antibody: HRP-conjugated Goat anti-Rabbit IgG (H+L) at 1/10000 dilution. Lysates/proteins: 25 µg per lane. Blocking buffer: 3% nonfat dry milk in TBST. Exposure time: 90s.



Immunohistochemistry analysis of paraffin-embedded Mouse colon using RIPK1/RIP Antibody at dilution of 1/50 (40x lens). High pressure antigen retrieval performed in 0.01 M Citrate buffer (pH 6.0) prior to IHC staining.



Immunofluorescence analysis of NIH/3T3 cells using RIPK1/RIP Antibody at dilution of 1/100 (40x lens). Secondary antibody: Cy3-conjugated Goat anti-Rabbit IgG (H+L) at 1/500 dilution. Blue: DAPI for nuclear staining.

RIPK1 Antibody is a Rabbit Polyclonal Antibody against RIPK1.

**Target:** Receptor Interacting Serine Threonine Kinase 1 (RIPK1)

**Clonality:** Polyclonal

**Reactivity:** Human, Mouse, Rat

# Datasheet

Version: 4.0.0  
Revision date: 18 Mar 2025



**Tested Applications:** ELISA, WB, IHC, IF/ICC, IP

**Host:** Rabbit

**Recommended dilutions:** ELISA: 1 µg/ml, WB: 1/500 - 1/1000, IHC-P: 1/50 - 1/200, IF/ICC: 1/50 - 1/200, IP: 0.5 µg - 4 µg antibody per 200 µg - 400 µg extracts of whole cells. Not tested in IHC-F. Optimal dilutions/concentrations should be determined by the end user.

**Conjugation:** Unconjugated

**Immunogen:** A synthetic peptide corresponding to a sequence within amino acids 100-200 of human RIPK1/RIP.

**Isotype:** IgG

**Form:** Liquid

**Purification:** Purified by affinity chromatography.

**Storage:** Aliquot and store at -20°C. Avoid repeated freeze/thaw cycles.

**UniProt Primary AC:** Q13546 ([UniProt](#), [ExPASy](#))

**Gene Symbol:** RIPK1

**GeneID:** [8737](#)

**NCBI Accession:** NP\_003795.2

**KEGG:** hsa:8737

**String:** [9606.ENSP00000259808](#)

**Molecular Weight:** Calculated MW: 76 kDa  
Observed MW: 75/38 kDa

**Buffer:** PBS, pH 7.3, containing 0.05% Proclin-300, 50% glycerol.

**Concentration:** > 0.2 mg/ml

**Note:** THIS PRODUCT IS FOR RESEARCH USE ONLY. NOT FOR USE IN DIAGNOSTIC, THERAPEUTIC OR COSMETIC PROCEDURES. NOT FOR HUMAN OR ANIMAL CONSUMPTION.