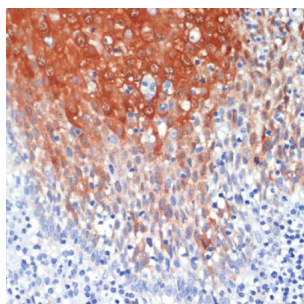
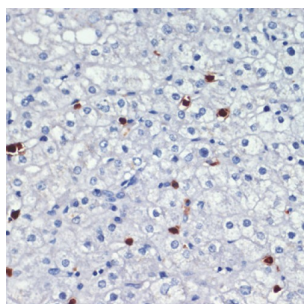


Protein S100-A8 / CAGA (S100A8) Antibody

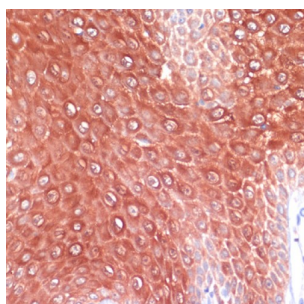
Catalogue No.: abx001416



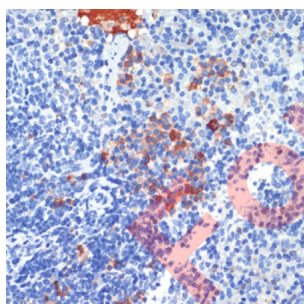
Immunohistochemistry of paraffin-embedded Human tonsil using S100A8 Antibody (1/200 dilution, 40x lens).



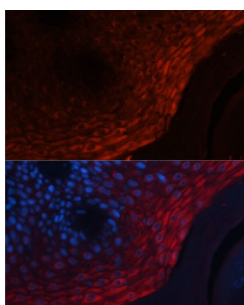
Immunohistochemistry of paraffin-embedded Human liver using S100A8 Antibody (1/200 dilution, 40x lens).



Immunohistochemistry of paraffin-embedded Human skin using S100A8 Antibody (1/200 dilution, 40x lens).



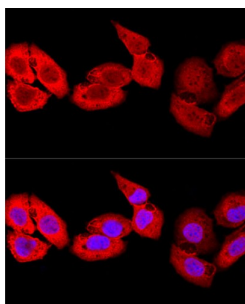
Immunohistochemistry of paraffin-embedded Mouse spleen using S100A8 Antibody (1/200 dilution, 40x lens).



Immunofluorescence analysis of Human skin cancer using S100A8 Antibody (1/100 dilution, 40x lens). Blue: DAPI for nuclear staining.

Datasheet

Version: 4.0.0
Revision date: 13 Mar 2025



Confocal immunofluorescence analysis of U-2 OS cells using S100A8 Antibody (1/100 dilution). Blue: DAPI for nuclear staining.

S100A8 Antibody is a Rabbit Polyclonal antibody against S100A8. The protein encoded by this gene is a member of the S100 family of proteins containing 2 EF-hand calcium-binding motifs. S100 proteins are localized in the cytoplasm and/or nucleus of a wide range of cells, and involved in the regulation of a number of cellular processes such as cell cycle progression and differentiation. S100 genes include at least 13 members which are located as a cluster on chromosome 1q21. This protein may function in the inhibition of casein kinase and as a cytokine. Altered expression of this protein is associated with the disease cystic fibrosis. [provided by RefSeq, Jul 2008].

Target:	Protein S100-A8 / CAGA (S100A8)
Clonality:	Polyclonal
Reactivity:	Human, Mouse, Rat
Tested Applications:	IHC, IF/ICC
Host:	Rabbit
Recommended dilutions:	IHC-P: 1/50 - 1/100, IF/ICC: 1/50 - 1/100. Not tested in IHC-F. Optimal dilutions/concentrations should be determined by the end user.
Conjugation:	Unconjugated
Immunogen:	Recombinant fusion protein corresponding to human S100A8
Isotype:	IgG
Form:	Liquid
Purification:	Purified by affinity chromatography.
Storage:	Aliquot and store at -20°C. Avoid repeated freeze/thaw cycles.
UniProt Primary AC:	P05109 (UniProt , ExPASy)
Gene Symbol:	S100A8

Datasheet

Version: 4.0.0
Revision date: 13 Mar 2025



GeneID: [6279](#)

NCBI Accession: NP_002955.2

KEGG: hsa:6279

String: [9606.ENSP00000357722](#)

Buffer: PBS, pH 7.3, containing 0.02% sodium azide, 50% glycerol.

Concentration: 1 mg/ml

Note: THIS PRODUCT IS FOR RESEARCH USE ONLY. NOT FOR USE IN DIAGNOSTIC, THERAPEUTIC OR COSMETIC PROCEDURES. NOT FOR HUMAN OR ANIMAL CONSUMPTION.

For Reference Only