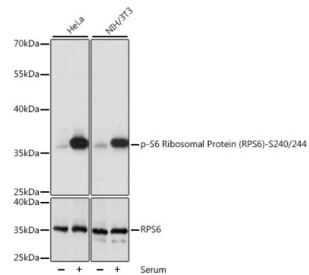
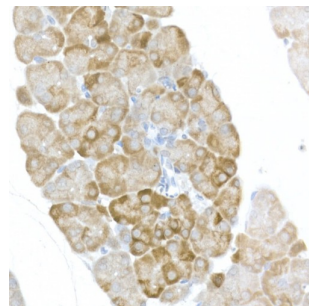


RPS6 (pS240 / 244) Antibody

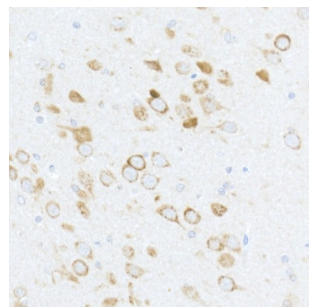
Catalogue No.:abx123582



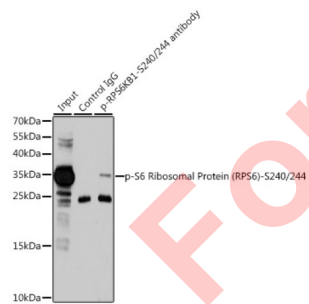
Western blot analysis of various lysates using Phospho-S6 Ribosomal Protein (RPS6)-S240/244 Antibody at 1/1000 dilution or RPS6 antibody. HeLa and NIH/3T3 cells were treated by 10% FBS at 37 °C for 30 minutes after serum-starvation overnight. Secondary antibody: HRP-conjugated Goat anti-Rabbit IgG (H+L) at 1/10000 dilution. Lysates/proteins: 25 µg per lane. Blocking buffer: 3% BSA. Exposure time: 1s.



Immunohistochemistry analysis of paraffin-embedded Mouse pancreas using Phospho-S6 Ribosomal Protein (RPS6)-S240/244 Antibody at dilution of 1/50 (40x lens). High pressure antigen retrieval performed in 0.01 M Citrate buffer (pH 6.0) prior to IHC staining.



Immunohistochemistry analysis of paraffin-embedded Rat brain using Phospho-S6 Ribosomal Protein (RPS6)-S240/244 Antibody at dilution of 1/50 (40x lens). High pressure antigen retrieval performed in 0.01 M Citrate buffer (pH 6.0) prior to IHC staining.



Immunoprecipitation analysis of 200 µg extracts of 293T cells, using 3 µg Phospho-S6 Ribosomal Protein (RPS6)-S240/244 antibody. Western blot was performed from the immunoprecipitate using Phospho-RPS6-S240/244 antibody at a dilution of 1/1000. 293T cells were treated by PMA/TPA (200 nM) at 37 °C for 30 minutes after serum-starvation overnight.

RPS6 (pS240/244) Antibody is a Rabbit Polyclonal Antibody against RPS6 (pS240/244).

Target: RPS6 (pS240/244)

Clonality: Polyclonal

Modification: Phosphorylation

Datasheet

Version: 3.0.0
Revision date: 01 Oct 2025



Reactivity:	Human, Mouse, Rat
Tested Applications:	ELISA, WB, IHC, IP
Host:	Rabbit
Recommended dilutions:	ELISA: 1 µg/ml, WB: 1/500 - 1/2000, IHC-P: 1/50 - 1/200, IP: 0.5 µg - 4 µg antibody per 200 µg - 400 µg extracts of whole cells. Not tested in IHC-F. Optimal dilutions/concentrations should be determined by the end user.
Conjugation:	Unconjugated
Immunogen:	A synthetic phosphorylated peptide around S240 & S244 of human RPS6.
Isotype:	IgG
Form:	Liquid
Purification:	Purified by affinity chromatography.
Storage:	Aliquot and store at -20°C. Avoid repeated freeze/thaw cycles.
UniProt Primary AC:	P62753 (UniProt , ExPASy)
Gene Symbol:	RPS6
GeneID:	6194
NCBI Accession:	NP_001001.2
KEGG:	hsa:6194
String:	9606.ENSP00000369757
Molecular Weight:	Calculated MW: 29 kDa Observed MW: 36 kDa
Buffer:	PBS, pH 7.3, containing 0.02% sodium azide, 50% glycerol.
Concentration:	> 0.2 mg/ml
Note:	THIS PRODUCT IS FOR RESEARCH USE ONLY. NOT FOR USE IN DIAGNOSTIC, THERAPEUTIC OR COSMETIC PROCEDURES. NOT FOR HUMAN OR ANIMAL CONSUMPTION.