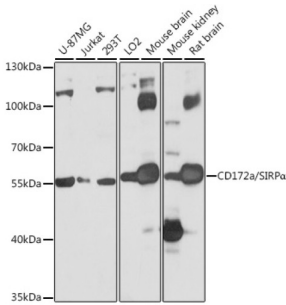
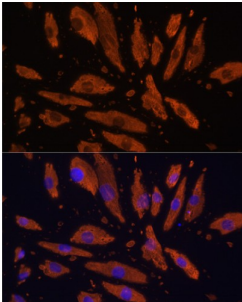


Signal Regulatory Protein Alpha (SIRPA) Antibody

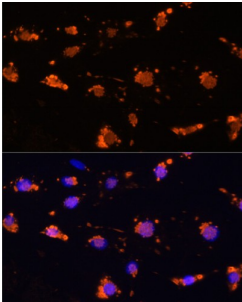
Catalogue No.: abx124885



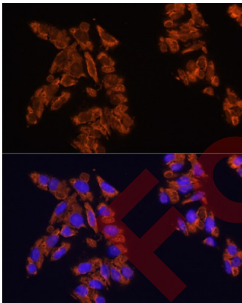
Western blot analysis of various lysates using CD172a/SIRPα Antibody at 1/1000 dilution. Secondary antibody: HRP-conjugated Goat anti-Rabbit IgG (H+L) at 1/10000 dilution. Lysates/proteins: 25 µg per lane. Blocking buffer: 3% nonfat dry milk in TBST. Exposure time: 1s.



Immunofluorescence analysis of H9C2 cells using CD172a/SIRPα Antibody at dilution of 1/100 (40x lens). Blue: DAPI for nuclear staining.



Immunofluorescence analysis of L929 cells using CD172a/SIRPα Antibody at dilution of 1/100 (40x lens). Blue: DAPI for nuclear staining.



Immunofluorescence analysis of U2OS cells using CD172a/SIRPα Antibody at dilution of 1/100 (40x lens). Blue: DAPI for nuclear staining.

SIRPA Antibody is a Rabbit Polyclonal Antibody against SIRPA.

Target: Signal Regulatory Protein Alpha (SIRPA)

Clonality: Polyclonal

Reactivity: Human, Mouse, Rat

Datasheet

Version: 6.0.0
Revision date: 13 Aug 2025



Tested Applications:	ELISA, WB, IF/ICC
Host:	Rabbit
Recommended dilutions:	ELISA: 1 µg/ml, WB: 1/500 - 1/2000, IF/ICC: 1/50 - 1/200. Optimal dilutions/concentrations should be determined by the end user.
Conjugation:	Unconjugated
Immunogen:	Recombinant protein corresponding to SIRPA. The exact sequence is proprietary.
Isotype:	IgG
Form:	Liquid
Purification:	Purified by affinity chromatography.
Storage:	Aliquot and store at -20°C. Avoid repeated freeze/thaw cycles.
UniProt Primary AC:	P78324 (UniProt , ExPASy)
Gene Symbol:	SIRPA
GeneID:	140885
NCBI Accession:	NP_542970.1
Molecular Weight:	Calculated MW: 55 kDa Observed MW: 65 kDa
Buffer:	PBS, pH 7.3, containing 0.02% sodium azide, 50% glycerol.
Concentration:	> 0.2 mg/ml
Note:	THIS PRODUCT IS FOR RESEARCH USE ONLY. NOT FOR USE IN DIAGNOSTIC, THERAPEUTIC OR COSMETIC PROCEDURES. NOT FOR HUMAN OR ANIMAL CONSUMPTION.