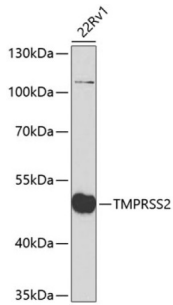
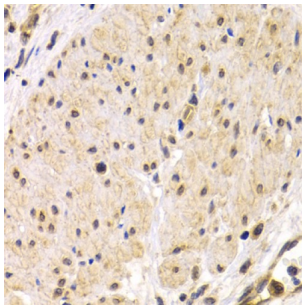


Transmembrane Protease, Serine 2 (TMPRSS2) Antibody

Catalogue No.: abx006715



Western blot analysis of extracts of 22Rv1 cells using TMPRSS2 Antibody (1/200 dilution).



Immunohistochemistry of paraffin-embedded Human stomach cancer using TMPRSS2 Antibody (1/200 dilution, 40x lens).

TMPRSS2 Antibody is a Rabbit Polyclonal Antibody against TMPRSS2.

Target:	Transmembrane Protease, Serine 2 (TMPRSS2)
Clonality:	Polyclonal
Reactivity:	Human, Mouse, Rat
Tested Applications:	WB, IHC
Host:	Rabbit
Recommended dilutions:	WB: 1/500 - 1/2000, IHC-P: 1/50 - 1/200. Not tested in IHC-F. Optimal dilutions/concentrations should be determined by the end user.
Conjugation:	Unconjugated
Immunogen:	Recombinant fusion protein corresponding to human TMPRSS2
Isotype:	IgG
Form:	Liquid
Purification:	Purified by affinity chromatography.

Datasheet

Version: 5.0.0
Revision date: 13 Sep 2025



Storage: Aliquot and store at -20°C. Avoid repeated freeze/thaw cycles.

UniProt Primary AC: O15393 ([UniProt](#), [ExPASy](#))

Gene Symbol: TMPRSS2

GeneID: [7113](#)

NCBI Accession: NP_005647.3

KEGG: hsa:7113

String: [9606.ENSP00000381588](#)

Molecular Weight: Calculated MW: 53 kDa/57 kDa
Observed MW: 52 kDa

Buffer: PBS, pH 7.3, containing 0.02% sodium azide, 50% glycerol.

Concentration: 1 mg/ml

Note: THIS PRODUCT IS FOR RESEARCH USE ONLY. NOT FOR USE IN DIAGNOSTIC, THERAPEUTIC OR COSMETIC PROCEDURES. NOT FOR HUMAN OR ANIMAL CONSUMPTION.

For Reference Only