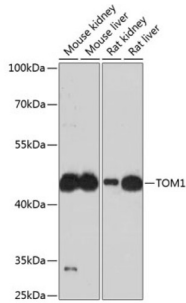


Target of Myb Protein 1 (TOM1) Antibody

Catalogue No.: abx123853



Western blot analysis of various lysates using TOM1 Antibody at 1/3000 dilution. Secondary antibody: HRP-conjugated Goat anti-Rabbit IgG (H+L) at 1/10000 dilution. Lysates/proteins: 25 µg per lane. Blocking buffer: 3% nonfat dry milk in TBST. Exposure time: 90s.

TOM1 Antibody is a Rabbit Polyclonal Antibody against TOM1.

Target:	Target of Myb Protein 1 (TOM1)
Clonality:	Polyclonal
Reactivity:	Mouse, Rat
Tested Applications:	ELISA, WB
Host:	Rabbit
Recommended dilutions:	ELISA: 1 µg/ml, WB: 1/500 - 1/2000. Optimal dilutions/concentrations should be determined by the end user.
Conjugation:	Unconjugated
Immunogen:	Recombinant protein corresponding to TOM1. The exact sequence is proprietary.
Isotype:	IgG
Form:	Liquid
Purification:	Purified by affinity chromatography.
Storage:	Aliquot and store at -20°C. Avoid repeated freeze/thaw cycles.
UniProt Primary AC:	O60784 (UniProt , ExpASY)
Gene Symbol:	TOM1
GeneID:	10043

Datasheet

Version: 5.0.0

Revision date: 24 Jul 2025



NCBI Accession: NP_001129204.1

Molecular Weight: Calculated MW: 54 kDa
Observed MW: 54 kDa

Buffer: PBS, pH 7.3, containing 0.01% thimerosal, 50% glycerol.

Concentration: > 0.2 mg/ml

Note: THIS PRODUCT IS FOR RESEARCH USE ONLY. NOT FOR USE IN DIAGNOSTIC, THERAPEUTIC OR COSMETIC PROCEDURES. NOT FOR HUMAN OR ANIMAL CONSUMPTION.

For Reference Only