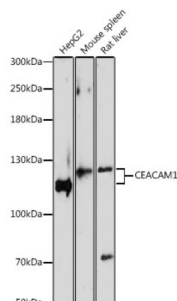


Carcinoembryonic Antigen Related Cell Adhesion Molecule 1 (CEACAM1) Antibody

Catalogue No.: abx001427



Western blot analysis of extracts of various cell lines using CEACAM1 Antibody (1/1000 dilution).

CEACAM1 Antibody is a Rabbit Polyclonal antibody against CEACAM1. This gene encodes a member of the carcinoembryonic antigen (CEA) gene family, which belongs to the immunoglobulin superfamily. Two subgroups of the CEA family, the CEA cell adhesion molecules and the pregnancy-specific glycoproteins, are located within a 1.2 Mb cluster on the long arm of chromosome 19. Eleven pseudogenes of the CEA cell adhesion molecule subgroup are also found in the cluster. The encoded protein was originally described in bile ducts of liver as biliary glycoprotein. Subsequently, it was found to be a cell-cell adhesion molecule detected on leukocytes, epithelia, and endothelia. The encoded protein mediates cell adhesion via homophilic as well as heterophilic binding to other proteins of the subgroup. Multiple cellular activities have been attributed to the encoded protein, including roles in the differentiation and arrangement of tissue three-dimensional structure, angiogenesis, apoptosis, tumor suppression, metastasis, and the modulation of innate and adaptive immune responses. Multiple transcript variants encoding different isoforms have been reported, but the full-length nature of all variants has not been defined.

Target: Carcinoembryonic Antigen Related Cell Adhesion Molecule 1 (CEACAM1)

Clonality: Polyclonal

Reactivity: Human, Mouse, Rat

Tested Applications: WB

Host: Rabbit

Recommended dilutions: WB: 1/500 - 1/2000. Optimal dilutions/concentrations should be determined by the end user.

Conjugation: Unconjugated

Immunogen: Recombinant fusion protein corresponding to human CEACAM1

Isotype: IgG

Form: Liquid

Purification: Purified by affinity chromatography.

Datasheet

Version: 5.0.0
Revision date: 14 Jun 2025



Storage: Aliquot and store at -20°C. Avoid repeated freeze/thaw cycles.

UniProt Primary AC: P13688 ([UniProt](#), [ExPASy](#))

Gene Symbol: CEACAM1

GeneID: [634](#)

NCBI Accession: NP_001703.2

KEGG: hsa:634

String: [9606.ENSP00000161559](#)

Molecular Weight: Calculated MW: 27 kDa/35-57 kDa
Observed MW: 120-130 kDa

Buffer: PBS, pH 7.3, containing 0.02% sodium azide, 50% glycerol.

Concentration: 1 mg/ml

Note: THIS PRODUCT IS FOR RESEARCH USE ONLY. NOT FOR USE IN DIAGNOSTIC, THERAPEUTIC OR COSMETIC PROCEDURES. NOT FOR HUMAN OR ANIMAL CONSUMPTION.

For Reference Only