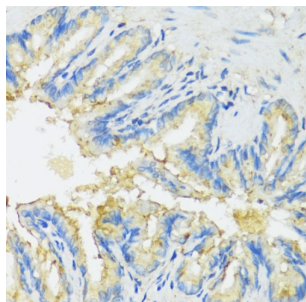
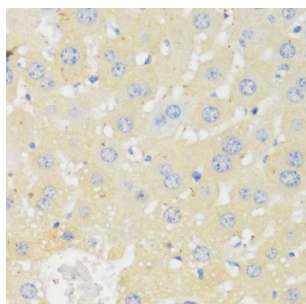


Cytochrome P450 11A1 (CYP11A1) Antibody

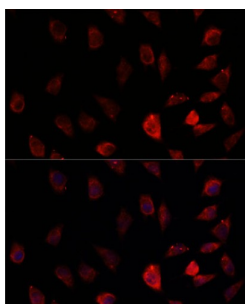
Catalogue No.: abx001432



Immunohistochemistry of paraffin-embedded Rat lung using CYP11A1 Antibody (1/100 dilution, 40x lens).



Immunohistochemistry of paraffin-embedded Mouse liver using CYP11A1 Antibody (1/100 dilution, 40x lens).



Immunofluorescence analysis of L929 cells using CYP11A1 Antibody (1/100 dilution). Blue: DAPI for nuclear staining.

CYP11A1 Antibody is a Rabbit Polyclonal antibody against CYP11A1. The formation of biologically active steroid hormones is significantly influenced by the mitochondrial cytochrome P450 enzyme, cholesterol side-chain cleavage. CYP11A1 functions in catalyzing the first step of steroid biosynthesis under modulation of cAMP. It is also known as cytochrome P450C11A1, cytochrome P450scc and cytochrome P450, subfamily XIA. Expression of CYP11A1 has been a useful tool for monitoring the differentiation state of cells from various endocrine tissues. Identification of CYP11A1 expression by 13363-1-AP detected a ~45kd band in human placenta, with respect to the reported band at 49-52kd by Roby, et al and Durkee, et al.

Target: Cytochrome P450 11A1 (CYP11A1)

Clonality: Polyclonal

Reactivity: Human, Mouse, Rat

Tested Applications: IHC, IF/ICC

Host: Rabbit

Datasheet

Version: 3.0.0
Revision date: 10 Jun 2025



Recommended dilutions: IHC-P: 1/50 - 1/200, IF/ICC: 1/50 - 1/200. Not tested in IHC-F. Optimal dilutions/concentrations should be determined by the end user.

Conjugation: Unconjugated

Immunogen: Recombinant fusion protein corresponding to human CYP11A1

Isotype: IgG

Form: Liquid

Purification: Purified by affinity chromatography.

Storage: Aliquot and store at -20°C. Avoid repeated freeze/thaw cycles.

UniProt Primary AC: P05108 ([UniProt](#), [ExPASy](#))

Gene Symbol: CYP11A1

GenelD: [1583](#)

NCBI Accession: NP_000772.2

KEGG: hsa:1583

String: [9606.ENSP00000268053](#)

Buffer: PBS, pH 7.3, containing 0.02% sodium azide, 50% glycerol.

Concentration: 1 mg/ml

Note: THIS PRODUCT IS FOR RESEARCH USE ONLY. NOT FOR USE IN DIAGNOSTIC, THERAPEUTIC OR COSMETIC PROCEDURES. NOT FOR HUMAN OR ANIMAL CONSUMPTION.