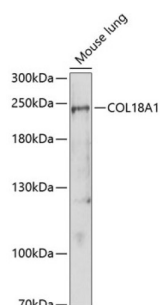


Collagen Type XVIII Alpha 1 (COL18A1) Antibody

Catalogue No.: abx001439



Western blot analysis of extracts of Mouse lung using COL18A1 Antibody (1/1000 dilution).

COL18A1 Antibody is a Rabbit Polyclonal antibody against COL18A1. This gene encodes the alpha chain of type XVIII collagen. This collagen is one of the multiplexins, extracellular matrix proteins that contain multiple triple-helix domains (collagenous domains) interrupted by non-collagenous domains. The proteolytically produced C-terminal fragment of type XVIII collagen is endostatin, a potent antiangiogenic protein. Mutations in this gene are associated with Knobloch syndrome. The main features of this syndrome involve retinal abnormalities, so type XVIII collagen may play an important role in retinal structure and in neural tube closure. Alternatively spliced transcript variants encoding different isoforms have been found for this gene. [provided by RefSeq, Sep 2008].

Target: Collagen Type XVIII Alpha 1 (COL18A1)

Clonality: Polyclonal

Reactivity: Mouse

Tested Applications: WB

Host: Rabbit

Recommended dilutions: WB: 1/500 - 1/1000. Optimal dilutions/concentrations should be determined by the end user.

Conjugation: Unconjugated

Immunogen: A synthetic peptide corresponding to human COL18A1

Isotype: IgG

Form: Liquid

Purification: Purified by affinity chromatography.

Storage: Aliquot and store at -20°C. Avoid repeated freeze/thaw cycles.

UniProt Primary AC: P39060 ([UniProt](#), [ExPASy](#))

Datasheet

Version: 4.0.0
Revision date: 22 Jun 2025



Gene Symbol: COL18A1

GeneID: [80781](#)

NCBI Accession: NP_085059.2

KEGG: hsa:80781

String: [9606.ENSP00000347665](#)

Molecular Weight: Calculated MW: 135 kDa/154 kDa/178 kDa
Observed MW: 240 kDa

Buffer: PBS, pH 7.3, containing 0.02% sodium azide, 50% glycerol.

Concentration: 1 mg/ml

Note: THIS PRODUCT IS FOR RESEARCH USE ONLY. NOT FOR USE IN DIAGNOSTIC, THERAPEUTIC OR COSMETIC PROCEDURES. NOT FOR HUMAN OR ANIMAL CONSUMPTION.

For Reference Only