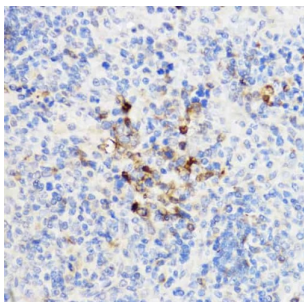
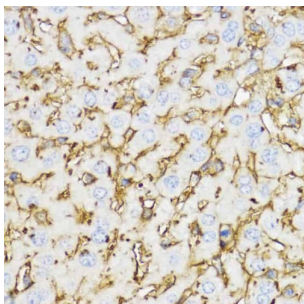


Chitinase-3-Like Protein 1 (CHI3L1) Antibody

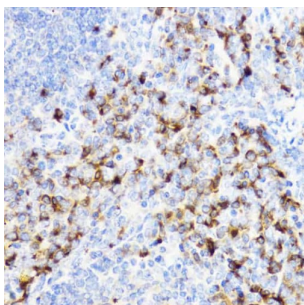
Catalogue No.: abx001440



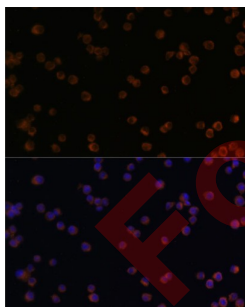
Immunohistochemistry of paraffin-embedded Rat spleen using YKL-40 / CHI3L1 Antibody (1/100 dilution, 40x lens).



Immunohistochemistry of paraffin-embedded Mouse liver using YKL-40 / CHI3L1 Antibody (1/100 dilution, 40x lens).



Immunohistochemistry of paraffin-embedded Mouse spleen using YKL-40 / CHI3L1 Antibody (1/100 dilution, 40x lens).



Immunofluorescence analysis of Raw264.7 cells using YKL-40 / CHI3L1 Antibody (1/100 dilution). Blue: DAPI for nuclear staining.

CHI3L1 Antibody is a Rabbit Polyclonal antibody against CHI3L1. Chitinases catalyze the hydrolysis of chitin, which is an abundant glycopolymer found in insect exoskeletons and fungal cell walls. The glycoside hydrolase 18 family of chitinases includes eight human family members. This gene encodes a glycoprotein member of the glycosyl hydrolase 18 family. The protein lacks chitinase activity and is secreted by activated macrophages, chondrocytes, neutrophils and synovial cells. The protein is thought to play a role in the process of inflammation and tissue remodeling. [provided by RefSeq, Sep 2009].

Target: Chitinase-3-Like Protein 1 (CHI3L1)

Datasheet

Version: 4.0.0
Revision date: 14 Oct 2025



Clonality:	Polyclonal
Reactivity:	Human, Mouse, Rat
Tested Applications:	IHC, IF/ICC
Host:	Rabbit
Recommended dilutions:	IHC-P: 1/50 - 1/200, IF/ICC: 1/50 - 1/200. Not tested in IHC-F. Optimal dilutions/concentrations should be determined by the end user.
Conjugation:	Unconjugated
Immunogen:	Recombinant fusion protein corresponding to human YKL-40 / CHI3L1
Isotype:	IgG
Form:	Liquid
Purification:	Purified by affinity chromatography.
Storage:	Aliquot and store at -20°C. Avoid repeated freeze/thaw cycles.
UniProt Primary AC:	P36222 (UniProt , ExPASy)
Gene Symbol:	CHI3L1
GeneID:	1116
OMIM:	181500
NCBI Accession:	NP_001267.2
HGNC:	1932
KEGG:	hsa:1116
Ensembl:	ENSG00000133048
String:	9606.ENSP00000255409
Buffer:	PBS, pH 7.3, containing 0.02% sodium azide, 50% glycerol.
Concentration:	1 mg/ml

Datasheet

Version: 4.0.0

Revision date: 14 Oct 2025



Note:

THIS PRODUCT IS FOR RESEARCH USE ONLY. NOT FOR USE IN DIAGNOSTIC, THERAPEUTIC OR COSMETIC PROCEDURES. NOT FOR HUMAN OR ANIMAL CONSUMPTION.

For Reference Only