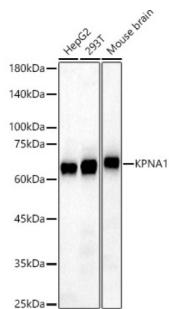
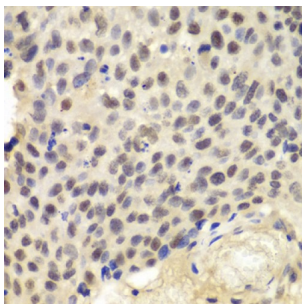


## Importin Subunit Alpha-5 (KPNA1) Antibody

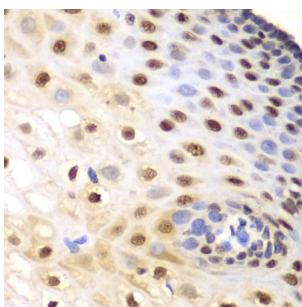
Catalogue No.: abx001450



Western blot analysis of various lysates, using KPNA1 Antibody at 1/1000 dilution. Secondary antibody: HRP-conjugated Goat anti-Rabbit IgG (H+L) at 1/10000 dilution. Lysates/proteins: 25 µg per lane. Blocking buffer: 3% nonfat dry milk in TBST. Exposure time: 10s.



Immunohistochemistry analysis of paraffin-embedded Human brain tissue using KPNA1 Antibody at a dilution of 1/100 (40x lens). High pressure antigen retrieval was performed in 0.01 M citrate buffer (pH 6.0) prior to IHC staining.



Immunohistochemistry analysis of paraffin-embedded Human kidney tissue using KPNA1 Antibody at a dilution of 1/100 (40x lens). High pressure antigen retrieval was performed in 0.01 M citrate buffer (pH 6.0) prior to IHC staining.

KPNA1 Antibody is a Rabbit Polyclonal antibody against KPNA1. The transport of molecules between the nucleus and the cytoplasm in eukaryotic cells is mediated by the nuclear pore complex (NPC), which consists of 60-100 proteins. Small molecules (up to 70 kD) can pass through the nuclear pore by nonselective diffusion while larger molecules are transported by an active process. The protein encoded by this gene belongs to the importin alpha family, and is involved in nuclear protein import. This protein interacts with the recombination activating gene 1 (RAG1) protein and is a putative substrate of the RAG1 ubiquitin ligase. Alternative splicing results in multiple transcript variants. [provided by RefSeq, Nov 2012].

**Target:** Importin Subunit Alpha-5 (KPNA1)

**Clonality:** Polyclonal

**Reactivity:** Human, Mouse, Rat

**Tested Applications:** ELISA, WB, IHC

**Host:** Rabbit

# Datasheet

Version: 4.0.0  
Revision date: 09 Oct 2025



**Recommended dilutions:** ELISA: 1 µg/ml, WB: 1/500 - 1/1000, IHC-P: 1/50 - 1/200. Not tested in IHC-F. Optimal dilutions/concentrations should be determined by the end user.

**Conjugation:** Unconjugated

**Immunogen:** Recombinant protein corresponding to KPNA1. The exact sequence is proprietary.

**Isotype:** IgG

**Form:** Liquid

**Purification:** Purified by affinity chromatography.

**Storage:** Aliquot and store at -20°C. Avoid repeated freeze/thaw cycles.

**UniProt Primary AC:** P52294 ([UniProt](#), [ExPASy](#))

**Gene Symbol:** KPNA1

**GeneID:** [3836](#)

**NCBI Accession:** NP\_002255.3

**KEGG:** hsa:3836

**String:** [9606.ENSP00000343701](#)

**Molecular Weight:** Calculated MW: 60 kDa  
Observed MW: 62 kDa

**Buffer:** PBS, pH 7.3, containing 0.09% sodium azide, 50% glycerol.

**Concentration:** > 0.2 mg/ml

**Note:** THIS PRODUCT IS FOR RESEARCH USE ONLY. NOT FOR USE IN DIAGNOSTIC, THERAPEUTIC OR COSMETIC PROCEDURES. NOT FOR HUMAN OR ANIMAL CONSUMPTION.