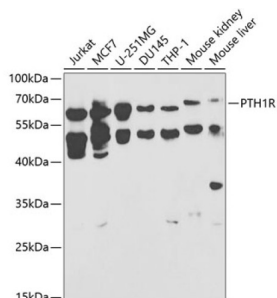
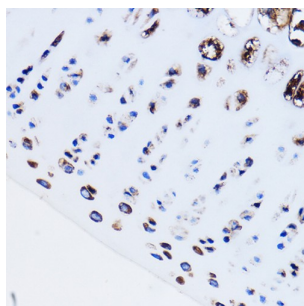


Parathyroid Hormone Receptor 1 (PTH1R) Antibody

Catalogue No.: abx001452



Western blot analysis of extracts of various cell lines using PTH1R Antibody (1/1000 dilution).



Immunohistochemistry of paraffin-embedded Rat leg bone using PTH1R Antibody (1/100 dilution, 40x lens). Microwave antigen retrieval was performed in 10 mM PBS buffer pH 7.2 before commencing with IHC staining protocol.

PTH1R Antibody is a Rabbit Polyclonal antibody against PTH1R. The protein encoded by this gene is a member of the G-protein coupled receptor family 2. This protein is a receptor for parathyroid hormone (PTH) and for parathyroid hormone-like hormone (PTHrP). The activity of this receptor is mediated by G proteins which activate adenylyl cyclase and also a phosphatidylinositol-calcium second messenger system. Defects in this receptor are known to be the cause of Jansen's metaphyseal chondrodysplasia (JMC), chondrodysplasia Blomstrand type (BOCD), as well as enchondromatosis. Two transcript variants encoding the same protein have been found for this gene. [provided by RefSeq, May 2010].

Target: Parathyroid Hormone Receptor 1 (PTH1R)

Clonality: Polyclonal

Reactivity: Human, Mouse, Rat

Tested Applications: WB, IHC

Host: Rabbit

Recommended dilutions: WB: 1/500 - 1/2000, IHC-P: 1/50 - 1/200. Not tested in IHC-F. Optimal dilutions/concentrations should be determined by the end user.

Conjugation: Unconjugated

Immunogen: Recombinant fusion protein corresponding to human PTH1R

Isotype: IgG

Datasheet

Version: 6.0.0
Revision date: 02 Sep 2025



Form:	Liquid
Purification:	Purified by affinity chromatography.
Storage:	Aliquot and store at -20°C. Avoid repeated freeze/thaw cycles.
UniProt Primary AC:	Q03431 (UniProt , ExPASy)
Gene Symbol:	PTH1R
GeneID:	5745
NCBI Accession:	NP_000307.1
KEGG:	hsa:5745
String:	9606.ENSP00000321999
Molecular Weight:	Calculated MW: 66 kDa Observed MW: 66 kDa
Buffer:	PBS, pH 7.3, containing 0.02% sodium azide, 50% glycerol.
Concentration:	1 mg/ml
Note:	THIS PRODUCT IS FOR RESEARCH USE ONLY. NOT FOR USE IN DIAGNOSTIC, THERAPEUTIC OR COSMETIC PROCEDURES. NOT FOR HUMAN OR ANIMAL CONSUMPTION.