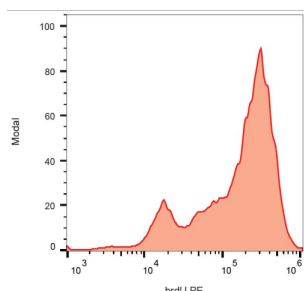
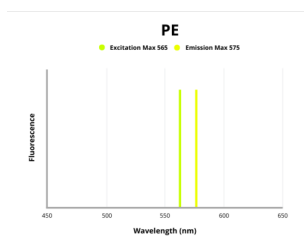


## Bromodeoxyuridine (BrdU) Antibody (PE)

Catalogue No.: abx140286



Intracellular staining of BrdU incorporated into the K562 cells. Stained using anti-BrdU PE.



Fluorescence emission spectra of PE.

Bromodeoxyuridine (BrdU) Antibody is a Mouse Monoclonal conjugated to PE against Bromodeoxyuridine (BrdU).

**Target:** Bromodeoxyuridine (BrdU)

**Clonality:** Monoclonal

**Clone:** P965

**Reactivity:** General

**Tested Applications:** FCM

**Host:** Mouse

**Recommended dilutions:** FCM: 10 µl/100 µl of whole blood or 10<sup>6</sup> cells. Optimal dilutions/concentrations should be determined by the end user.

**Conjugation:** PE

**Excitation/Emission:** 565/575

**Laser Line:** 550

**Immunogen:** Bromodeoxyuridine conjugated to BSA.

# Datasheet

Version: 2.0.0

Revision date: 09 Jun 2025



<b>Isotype:</b>	IgG <sub>1</sub>
<b>Storage:</b>	Store in the dark at 2-8°C. Avoid exposure to light. Do not freeze.
<b>Buffer:</b>	Stabilizing PBS solution containing 15 mM sodium azide.
<b>Specificity:</b>	The antibody reacts specifically with BrdU incorporated into DNA during S-phase of a cell cycle. It is useful for detecting proliferating cells by flow cytometry or immunohistochemistry staining.
<b>Note:</b>	THIS PRODUCT IS FOR RESEARCH USE ONLY. NOT FOR USE IN DIAGNOSTIC, THERAPEUTIC OR COSMETIC PROCEDURES. NOT FOR HUMAN OR ANIMAL CONSUMPTION.

For Reference Only