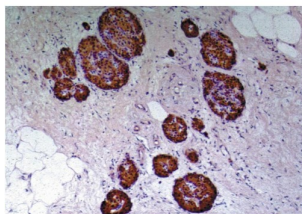


C-peptide of Proinsulin Antibody

Catalogue No.: abx139586



IHC-P analysis of human pancreas.

C-peptide of Proinsulin Antibody is a Mouse Monoclonal against C-peptide of Proinsulin.

Target: C-peptide of Proinsulin

Clonality: Monoclonal

Clone: Q232

Reactivity: Human

Tested Applications: ELISA, IHC, IF/ICC, RIA

Host: Mouse

Recommended dilutions: IHC-P: 2-5 µg/ml. Optimal dilutions/concentrations should be determined by the end user.

Conjugation: Unconjugated

Immunogen: Human C-peptide conjugated to bovine serum albumin.

Isotype: IgG₁

Purification: Purified by Protein A affinity chromatography.

Storage: Store at 2-8°C. Do not freeze.

UniProt Primary AC: P01308 ([UniProt](#), [ExPASy](#))

Gene Symbol: INS

GeneID: [3630](#)

Datasheet

Version: 4.0.0

Revision date: 08 Aug 2025



KEGG: hsa:3630

String: [9606.ENSP00000380432](#)

Buffer: PBS solution with 15 mM sodium azide.

Specificity: The antibody reacts specifically with C-peptide, a part of the Proinsulin molecule. Proinsulin consists of the three parts: C-peptide and two long strands of amino acids (alpha and beta chains; later become linked together to form the Insulin molecule).
No cross-reactivity with Insulin or other peptide hormones or proteins was observed.

Concentration: 1 mg/ml

Note: THIS PRODUCT IS FOR RESEARCH USE ONLY. NOT FOR USE IN DIAGNOSTIC, THERAPEUTIC OR COSMETIC PROCEDURES. NOT FOR HUMAN OR ANIMAL CONSUMPTION.

For Reference Only