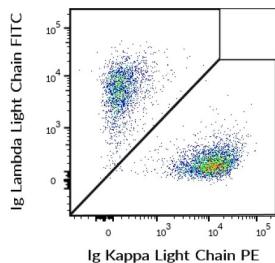
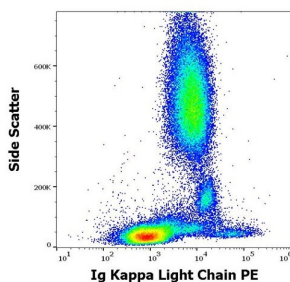


Kappa Light Chain Antibody (PE)

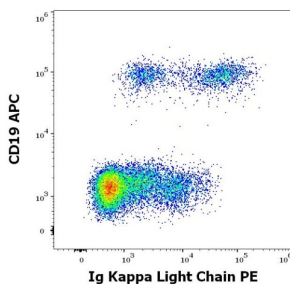
Catalogue No.:abx140278



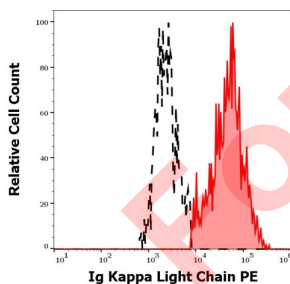
Flow cytometry multicolor surface staining of human CD19 positive B cells, using PE-conjugated anti-human Ig Kappa Light Chain antibody (abx140278, 5 µg/ml) and FITC-conjugated mouse anti-human Ig Lambda Light Chain antibody ([abx140281](#), 5 µg/ml).



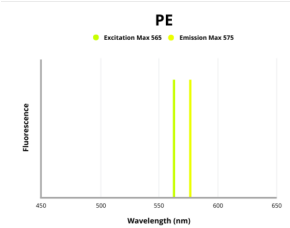
Flow cytometry surface staining pattern of human peripheral whole blood, using PE conjugated mouse anti-human Ig Kappa Light Chain antibody (abx140278, 10 µl reagent in 100 µl of peripheral whole blood).



Flow cytometry multicolor surface staining of human lymphocytes, using PE-conjugated anti-human Ig Kappa Light Chain antibody (abx140278, 10 µl reagent in 100 µl of peripheral whole blood) and APC-conjugated mouse anti-human CD19 antibody (10 µl reagent in 100 µl of peripheral whole blood).



Separation of human Ig Lambda Kappa Chain positive B cells (red) from Ig Kappa Light Chain negative B cells (black) in flow cytometry analysis (surface staining) of human peripheral whole blood stained, using PE-conjugated anti-human Ig Kappa Light Chain antibody (abx140278, 10 µl reagent in 100 µl of peripheral whole blood)



Fluorescence emission spectra of PE.

Datasheet

Version: 5.0.0
Revision date: 01 Jun 2025



Kappa Light Chain Antibody is a Mouse Monoclonal against Ig Kappa Light chain.

Target:	Kappa Light Chain
Clonality:	Monoclonal
Clone:	H304
Reactivity:	Human
Tested Applications:	FCM
Host:	Mouse
Recommended dilutions:	FCM: 10 µl/100 µl of whole blood or 10 ⁶ cells. Optimal dilutions/concentrations should be determined by the end user.
Conjugation:	PE
Excitation/Emission:	565/575
Laser Line:	550
Immunogen:	Human IgG-kappa myeloma protein.
Isotype:	IgG ₁ Kappa
Purification:	The PE conjugate was purified by size-exclusion chromatography.
Storage:	Store in the dark at 2-8°C. Avoid exposure to light. Do not freeze.
Buffer:	Stabilizing PBS solution, pH 7.4, containing 15 mM sodium azide.
Specificity:	The antibody recognizes human Ig kappa light chains of both secreted and cell surface immunoglobulin. It detects also free kappa light chains.
Concentration:	0.1 mg/ml
Note:	THIS PRODUCT IS FOR RESEARCH USE ONLY. NOT FOR USE IN DIAGNOSTIC, THERAPEUTIC OR COSMETIC PROCEDURES. NOT FOR HUMAN OR ANIMAL CONSUMPTION.