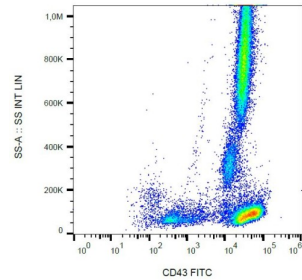
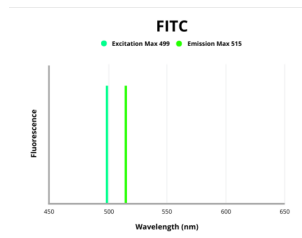


CD43 Antibody (FITC)

Catalogue No.: abx139888



Surface staining of human peripheral blood with anti-CD43 FITC.



Fluorescence emission spectra of FITC.

CD43 Antibody is a Mouse Monoclonal against CD43.

Target: CD43

Clonality: Monoclonal

Clone: M529

Reactivity: Human

Tested Applications: FCM

Host: Mouse

Recommended dilutions: FCM: 20 µl/100 µl of whole blood or 10⁶ cells. Validated in IHC-P. Optimal dilutions/concentrations should be determined by the end user. The content of a vial (2 ml) is sufficient for 100 tests.

Conjugation: FITC

Excitation/Emission: 499/515

Laser Line: 488

Immunogen: Human T lymphocytes.

Datasheet

Version: 2.0.0
Revision date: 04 Jun 2025



Isotype:	IgG ₁
Storage:	Store in the dark at 2-8°C. Avoid exposure to light. Do not freeze.
UniProt Primary AC:	P16150 (UniProt , ExPASy)
Gene Symbol:	SPN
GeneID:	6693
KEGG:	hsa:6693
String:	9606.ENSP00000353238
Buffer:	Stabilizing PBS solution containing 15 mM sodium azide.
Specificity:	The antibody recognizes neuraminidase-sensitive epitope on CD43 (Leukosialin), a 95-135 kDa type I transmembrane glycoprotein (mucin-type) which is involved in lymphocyte activation. CD43 is expressed by platelets and at high levels on the surface of all leukocytes; it is negative on resting B lymphocytes and erythrocytes.
Note:	THIS PRODUCT IS FOR RESEARCH USE ONLY. NOT FOR USE IN DIAGNOSTIC, THERAPEUTIC OR COSMETIC PROCEDURES. NOT FOR HUMAN OR ANIMAL CONSUMPTION.