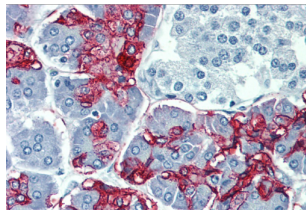
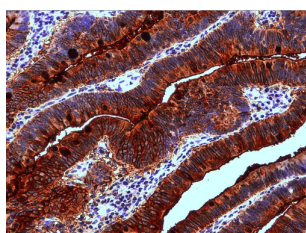


## Blood Group Lewis a Antibody

Catalogue No.: abx140269



Immunohistochemistry analysis of paraffin-embedded Human pancreas using Blood Group Lewis a Antibody.



Immunohistochemistry analysis of paraffin-embedded Human colon adenocarcinoma using Blood Group Lewis a Antibody.

Blood Group Lewis a Antibody is a Mouse Monoclonal against Blood Group Lewis a.

**Target:** Blood Group Lewis a

**Clonality:** Monoclonal

**Clone:** P771

**Reactivity:** Human

**Tested Applications:** ELISA, WB, IHC

**Host:** Mouse

**Recommended dilutions:** Validated in IHC-P. Optimal dilutions/concentrations should be determined by the end user.

**Conjugation:** Unconjugated

**Immunogen:** Mucin isolated by size-exclusion chromatography from an ovarian cyst fluid (pure endocervical type according to the Fenoglio's classification).

**Isotype:** IgG<sub>1</sub>

**Purification:** Purified by Protein A affinity chromatography.

# Datasheet

Version: 4.0.0

Revision date: 02 Jul 2025



**Storage:** Store at 2-8°C. Do not freeze.

**Buffer:** PBS solution with 15 mM sodium azide.

**Specificity:** The antibody recognizes Lewis<sup>a</sup> blood group antigen, a carbohydrate determinant carried on both glycolipids and glycoproteins, expressed in colonic epithelial cells. Lewis<sup>a</sup> may be useful for detection of gastrointestinal, pancreatic and colorectal tumors.

**Concentration:** 1 mg/ml

**Note:** THIS PRODUCT IS FOR RESEARCH USE ONLY. NOT FOR USE IN DIAGNOSTIC, THERAPEUTIC OR COSMETIC PROCEDURES. NOT FOR HUMAN OR ANIMAL CONSUMPTION.

For Reference Only