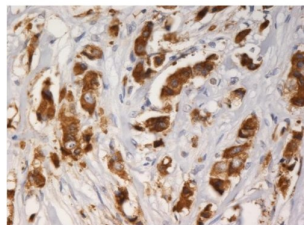
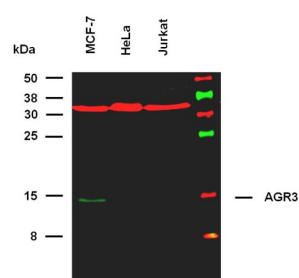


## Anterior Gradient Protein 3 (AGR3) Antibody

Catalogue No.: abx140155



IHC-P analysis of breast carcinoma tissue, using anti-AGR3 antibody.



WB analysis of whole cell extracts using anti-AGR3 antibody (1 µg/ml) and goat-anti-mouse IgG (green). Detection of AGR3 was at 14 kDa.

AGR3 Antibody is a Mouse Monoclonal against AGR3.

**Target:** Anterior Gradient Protein 3 (AGR3)

**Clonality:** Monoclonal

**Clone:** S788

**Reactivity:** Human

**Tested Applications:** WB, IHC, IF/ICC

**Host:** Mouse

**Recommended dilutions:** Optimal dilutions/concentrations should be determined by the end user.

**Conjugation:** Unconjugated

**Immunogen:** Purified Human AGR3 protein.

**Isotype:** IgG<sub>1</sub>

**Purity:** > 95% (SDS-PAGE)

# Datasheet

Version: 3.0.0  
Revision date: 23 Aug 2025



<b>Purification:</b>	Purified by Protein A affinity chromatography.
<b>Storage:</b>	Store at 2-8°C. Do not freeze.
<b>UniProt Primary AC:</b>	Q8TD06 ( <a href="#">UniProt</a> , <a href="#">ExPASy</a> )
<b>Gene Symbol:</b>	AGR3
<b>GeneID:</b>	<a href="#">155465</a>
<b>KEGG:</b>	hsa:155465
<b>String:</b>	<a href="#">9606.ENSP00000308606</a>
<b>Buffer:</b>	PBS solution with 15 mM sodium azide.
<b>Specificity:</b>	The antibody recognizes the epitope HETTDKNLS within the AGR3 (AG3) protein (19-20 kDa); a secreted cytoplasmic protein which can serve as a marker of carcinogenesis.
<b>Concentration:</b>	1 mg/ml
<b>Note:</b>	THIS PRODUCT IS FOR RESEARCH USE ONLY. NOT FOR USE IN DIAGNOSTIC, THERAPEUTIC OR COSMETIC PROCEDURES. NOT FOR HUMAN OR ANIMAL CONSUMPTION.