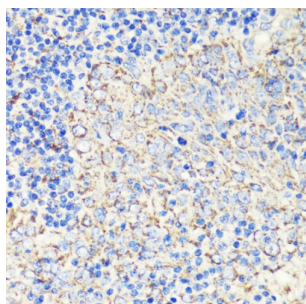
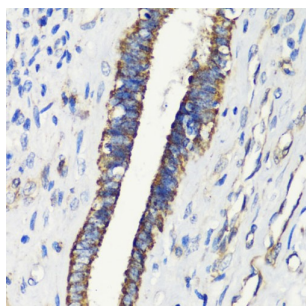


FK506 Binding Protein 1A (FKBP1A) Antibody

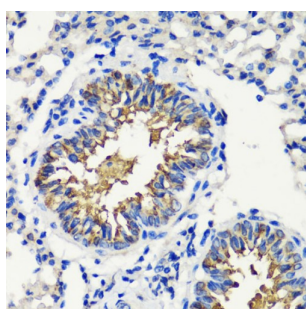
Catalogue No.: abx001462



Immunohistochemistry of paraffin-embedded Human tonsil using FKBP1A Antibody (1/200 dilution, 40x lens).



Immunohistochemistry of paraffin-embedded Human uterine cancer using FKBP1A Antibody (1/200 dilution, 40x lens).



Immunohistochemistry of paraffin-embedded Mouse lung using FKBP1A Antibody (1/200 dilution, 40x lens).

FKBP1A Antibody is a Rabbit Polyclonal antibody against FKBP1A. The protein encoded by this gene is a member of the immunophilin protein family, which play a role in immunoregulation and basic cellular processes involving protein folding and trafficking. The protein is a cis-trans prolyl isomerase that binds the immunosuppressants FK506 and rapamycin. It interacts with several intracellular signal transduction proteins including type I TGF-beta receptor. It also interacts with multiple intracellular calcium release channels, and coordinates multi-protein complex formation of the tetrameric skeletal muscle ryanodine receptor. In mouse, deletion of this homologous gene causes congenital heart disorder known as noncompaction of left ventricular myocardium. Multiple alternatively spliced variants, encoding the same protein, have been identified. The human genome contains five pseudogenes related to this gene, at least one of which is transcribed. [provided by RefSeq, Sep 2008].

Target: FK506 Binding Protein 1A (FKBP1A)

Clonality: Polyclonal

Reactivity: Human, Mouse, Rat

Tested Applications: IHC

Datasheet

Version: 4.0.0
Revision date: 29 Jun 2025



Host: Rabbit

Recommended dilutions: IHC-P: 1/50 - 1/200. Not tested in IHC-F. Optimal dilutions/concentrations should be determined by the end user.

Conjugation: Unconjugated

Immunogen: Recombinant fusion protein corresponding to human FKBP1A

Isotype: IgG

Form: Liquid

Purification: Purified by affinity chromatography.

Storage: Aliquot and store at -20°C. Avoid repeated freeze/thaw cycles.

UniProt Primary AC: P62942 ([UniProt](#), [ExPASy](#))

Gene Symbol: FKBP1A

GeneID: [2280](#)

NCBI Accession: NP_000792.1

KEGG: hsa:2280

String: [9606.ENSP00000383003](#)

Buffer: PBS, pH 7.3, containing 0.02% sodium azide, 50% glycerol.

Concentration: 1 mg/ml

Note: THIS PRODUCT IS FOR RESEARCH USE ONLY. NOT FOR USE IN DIAGNOSTIC, THERAPEUTIC OR COSMETIC PROCEDURES. NOT FOR HUMAN OR ANIMAL CONSUMPTION.