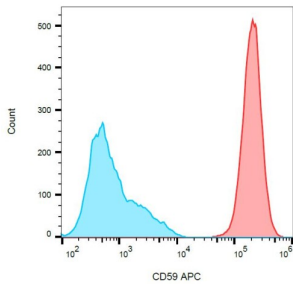
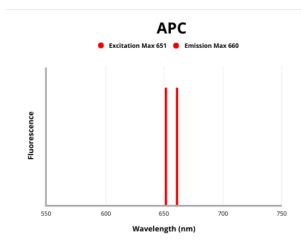


# CD59 Glycoprotein (CD59) Antibody (APC)

Catalogue No.: abx139309



Surface staining of HL-60 (positive) and SP2 (negative) cells with anti-human CD59 APC.



Fluorescence emission spectra of APC.

CD59 Antibody is a Mouse Monoclonal against CD59.

**Target:** CD59 Glycoprotein (CD59)

**Clonality:** Monoclonal

**Clone:** T964

**Reactivity:** Human

**Tested Applications:** FCM

**Host:** Mouse

**Recommended dilutions:** FCM: 10 µl/100 µl of whole blood or 10<sup>6</sup> cells. Validated in IHC-P. Optimal dilutions/concentrations should be determined by the end user.

**Conjugation:** APC

**Excitation/Emission:** 651/660

**Laser Line:** 647

**Immunogen:** Thymocytes and T lymphocytes.

# Datasheet

Version: 3.0.0  
Revision date: 15 Jun 2025



<b>Isotype:</b>	IgG <sub>2a</sub> Kappa
<b>Storage:</b>	Store in the dark at 2-8°C. Avoid exposure to light. Do not freeze.
<b>UniProt Primary AC:</b>	P13987 ( <a href="#">UniProt</a> , <a href="#">ExPASy</a> )
<b>Gene Symbol:</b>	CD59
<b>GeneID:</b>	<a href="#">966</a>
<b>Buffer:</b>	Stabilizing PBS solution containing 15 mM sodium azide.
<b>Specificity:</b>	The antibody reacts with well defined epitope (W40, R-53) on CD59 (Protectin), an 18-20 kDa glycosylphosphatidylinositol (GPI)-anchored glycoprotein expressed on all hematopoietic cells; it is widely present on cells in all tissues.
<b>Note:</b>	THIS PRODUCT IS FOR RESEARCH USE ONLY. NOT FOR USE IN DIAGNOSTIC, THERAPEUTIC OR COSMETIC PROCEDURES. NOT FOR HUMAN OR ANIMAL CONSUMPTION.

For Reference Only