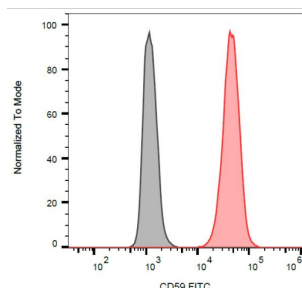
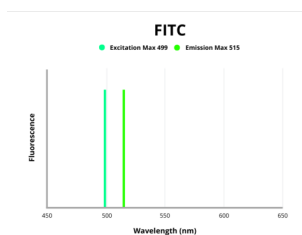


CD59 Glycoprotein (CD59) Antibody (FITC)

Catalogue No.: abx139311



Surface staining of HL-60 (positive) and SP2 (negative) cells with anti-human CD59 FITC.



Fluorescence emission spectra of FITC.

CD59 Antibody is a Mouse Monoclonal against CD59.

Target: CD59 Glycoprotein (CD59)

Clonality: Monoclonal

Clone: T964

Reactivity: Human

Tested Applications: FCM

Host: Mouse

Recommended dilutions: FCM: 20 µl/100 µl of whole blood or 10⁶ cells. Validated in IHC-P. Optimal dilutions/concentrations should be determined by the end user. The content of a vial (2 ml) is sufficient for 100 tests.

Conjugation: FITC

Excitation/Emission: 499/515

Laser Line: 488

Immunogen: Thymocytes and T lymphocytes.

Datasheet

Version: 6.0.0
Revision date: 19 Jul 2025



| | |
|----------------------------|--|
| Isotype: | IgG _{2a} Kappa |
| Storage: | Store in the dark at 2-8°C. Avoid exposure to light. Do not freeze. |
| UniProt Primary AC: | P13987 (UniProt , ExPASy) |
| Gene Symbol: | CD59 |
| GeneID: | 966 |
| Buffer: | Stabilizing PBS solution containing 15 mM sodium azide. |
| Specificity: | The antibody reacts with well defined epitope (W40, R-53) on CD59 (Protectin), an 18-20 kDa glycosylphosphatidylinositol (GPI)-anchored glycoprotein expressed on all hematopoietic cells; it is widely present on cells in all tissues. |
| Note: | THIS PRODUCT IS FOR RESEARCH USE ONLY. NOT FOR USE IN DIAGNOSTIC, THERAPEUTIC OR COSMETIC PROCEDURES. NOT FOR HUMAN OR ANIMAL CONSUMPTION. |

For Reference Only