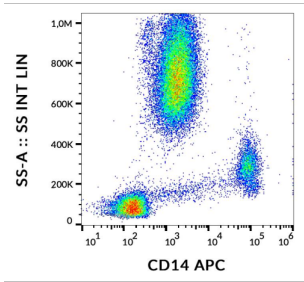
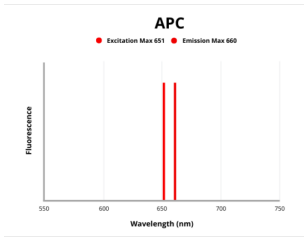


Cluster Of Differentiation 14 (CD14) Antibody (APC)

Catalogue No.:abx139174



Surface staining of human peripheral blood cells with human CD14 Antibody (APC).



Fluorescence emission spectra of APC.

CD14 Antibody is a Mouse Monoclonal against CD14.

Target: Cluster Of Differentiation 14 (CD14)

Clonality: Monoclonal

Clone: Z327

Reactivity: Human, Monkey

Tested Applications: FCM

Host: Mouse

Recommended dilutions: FCM: 10 µl/100 µl of whole blood or 10⁶ cells. Optimal dilutions/concentrations should be determined by the end user.

Conjugation: APC

Excitation/Emission: 651/660

Laser Line: 647

Datasheet

Version: 4.0.0
Revision date: 12 Oct 2025



Immunogen:	A crude mixture of Human urinary proteins precipitated by ammonium sulphate from the urine of a patient suffering from proteinuria.
Isotype:	IgG ₁ Kappa
Storage:	Store in the dark at 2-8°C. Avoid exposure to light. Do not freeze.
UniProt Primary AC:	P08571 (UniProt , ExPASy)
Gene Symbol:	CD14
GenelD:	929
KEGG:	hsa:929
String:	9606.ENSP00000304236
Buffer:	Stabilizing PBS solution containing 15 mM sodium azide.
Specificity:	<p>The antibody reacts with CD14, a 53-55 kDa GPI (glycosylphosphatidylinositol)-linked membrane glycoprotein expressed on monocytes, macrophages and weakly on granulocytes; also expressed by most tissue macrophages.</p> <p>The antibody also reacts with soluble forms of CD14 found in serum and in the urine of some nephrotic patients.</p>
Note:	THIS PRODUCT IS FOR RESEARCH USE ONLY. NOT FOR USE IN DIAGNOSTIC, THERAPEUTIC OR COSMETIC PROCEDURES. NOT FOR HUMAN OR ANIMAL CONSUMPTION.