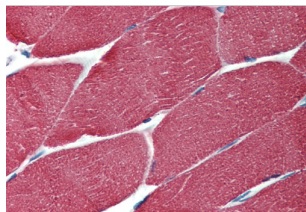


Actin Antibody

Catalogue No.: abx140256



Immunohistochemistry staining of human muscle (paraffin-embedded sections) with anti-muscle-specific actin.

Actin Antibody is a Mouse Monoclonal against Actin.

Target:	Actin
Clonality:	Monoclonal
Clone:	G361
Reactivity:	Human, Monkey, Mouse, Rat, Dog, Cat, Rabbit, Chicken
Tested Applications:	WB, IHC, IF/ICC
Host:	Mouse
Recommended dilutions:	Optimal dilutions/concentrations should be determined by the end user.
Conjugation:	Unconjugated
Immunogen:	SDS extracted protein fraction of Human myocardium.
Isotype:	IgG ₁
Purity:	> 95% (SDS-PAGE)
Purification:	Purified by Protein A affinity chromatography.
Storage:	Store at 2-8°C. Do not freeze.
Buffer:	PBS solution with 15 mM sodium azide.

Datasheet

Version: 3.0.0

Revision date: 19 May 2025



Specificity:	The mouse monoclonal antibody recognizes muscle-specific alpha and gamma actin (42 kDa) in various species. This antibody stains skeletal, smooth and myocardial cells as well as myoepithelial cells and pericytes of small vessels. It is a widely used marker of muscle and muscle-derived cells.
Concentration:	1 mg/ml
Note:	THIS PRODUCT IS FOR RESEARCH USE ONLY. NOT FOR USE IN DIAGNOSTIC, THERAPEUTIC OR COSMETIC PROCEDURES. NOT FOR HUMAN OR ANIMAL CONSUMPTION.

For Reference Only