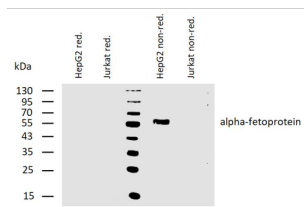


Alpha Fetoprotein (AFP) Antibody

Catalogue No.: abx139034



WB analysis of HepG2 and Jurkat cell lysates, under reducing and non-reducing conditions using Alpha Fetoprotein (AFP) Antibody (2 µg/ml) and IRDye800-conjugated Mouse secondary antibody. Alpha Fetoprotein was detected at approximately 60 kDa.

alpha-Fetoprotein Antibody is a Mouse Monoclonal against alpha-Fetoprotein.

Target: Alpha Fetoprotein (AFP)

Clonality: Monoclonal

Clone: T272

Reactivity: Human

Tested Applications: ELISA, WB, IP, IF/ICC

Host: Mouse

Recommended dilutions: WB: 1-2 µg/ml (non-reducing conditions). Optimal dilutions/concentrations should be determined by the end user.

Conjugation: Unconjugated

Immunogen: Purified alpha-Fetoprotein.

Isotype: IgG₁

Purity: > 95% (SDS-PAGE)

Purification: Purified from ascites by precipitation and chromatography.

Storage: Store at 2-8°C. Do not freeze.

UniProt Primary AC: P02771 ([UniProt](#), [ExPASy](#))

Gene Symbol: AFP

Datasheet

Version: 2.0.0

Revision date: 28 Jun 2025



GeneID: [174](#)

KEGG: hsa:174

String: [9606.ENSP00000379138](#)

Buffer: PBS solution with 15 mM sodium azide.

Specificity: The antibody reacts with human alpha-Fetoprotein (AFP), a 70 kDa oncofetal antigen. AFP is a major fetal plasma protein, but is not present in healthy adult tissues. Elevated AFP concentrations in adult plasma may be an early marker of hepatocellular carcinoma or teratoblastoma, while high concentrations in amniotic fluid may indicate severe congenital defects of a fetus.

Concentration: 1 mg/ml

Note: THIS PRODUCT IS FOR RESEARCH USE ONLY. NOT FOR USE IN DIAGNOSTIC, THERAPEUTIC OR COSMETIC PROCEDURES. NOT FOR HUMAN OR ANIMAL CONSUMPTION.

For Reference Only