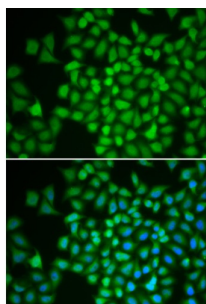
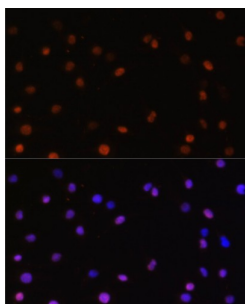


## COP9 Signalosome Subunit 5 (COPS5) Antibody

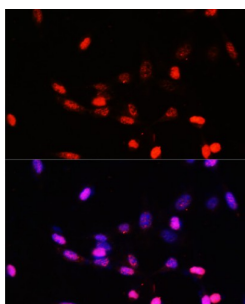
Catalogue No.: abx001465



Immunofluorescence analysis of HeLa cells using COPS5 Antibody



Immunofluorescence analysis of C6 cells using COPS5 Antibody (1/100 dilution). Blue: DAPI for nuclear staining.



Immunofluorescence analysis of NIH/3T3 cells using COPS5 Antibody (1/100 dilution). Blue: DAPI for nuclear staining.

COPS5 Antibody is a Rabbit Polyclonal antibody against COPS5. The protein encoded by this gene is one of the eight subunits of COP9 signalosome, a highly conserved protein complex that functions as an important regulator in multiple signaling pathways. The structure and function of COP9 signalosome is similar to that of the 19S regulatory particle of 26S proteasome. COP9 signalosome has been shown to interact with SCF-type E3 ubiquitin ligases and act as a positive regulator of E3 ubiquitin ligases. This protein is reported to be involved in the degradation of cyclin-dependent kinase inhibitor CDKN1B/p27Kip1. It is also known to be an coactivator that increases the specificity of JUN/AP1 transcription factors.

**Target:** COP9 Signalosome Subunit 5 (COPS5)

**Clonality:** Polyclonal

**Reactivity:** Human, Mouse, Rat

**Tested Applications:** IF/ICC

**Host:** Rabbit

# Datasheet

Version: 5.0.0  
Revision date: 13 Oct 2025



**Recommended dilutions:** IF/ICC: 1/50 - 1/100. Optimal dilutions/concentrations should be determined by the end user.

**Conjugation:** Unconjugated

**Immunogen:** Recombinant fusion protein corresponding to human COPS5

**Isotype:** IgG

**Form:** Liquid

**Purification:** Purified by affinity chromatography.

**Storage:** Aliquot and store at -20°C. Avoid repeated freeze/thaw cycles.

**UniProt Primary AC:** Q92905 ([UniProt](#), [ExPASy](#))

**Gene Symbol:** COPS5

**GeneID:** [10987](#)

**NCBI Accession:** NP\_006828.2

**KEGG:** hsa:10987

**String:** [9606.ENSP00000350512](#)

**Buffer:** PBS, pH 7.3, containing 0.02% sodium azide, 50% glycerol.

**Concentration:** 1 mg/ml

**Note:** THIS PRODUCT IS FOR RESEARCH USE ONLY. NOT FOR USE IN DIAGNOSTIC, THERAPEUTIC OR COSMETIC PROCEDURES. NOT FOR HUMAN OR ANIMAL CONSUMPTION.