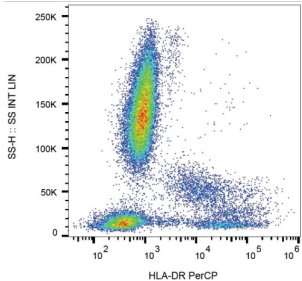
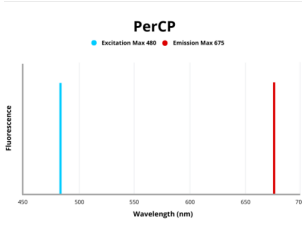


HLA-DR Antigens-Associated Invariant Chain (HLA-DR) Antibody (PerCP)

Catalogue No.: abx140293



Surface staining of human peripheral blood cells with anti-human HLA-DR PerCP.



Fluorescence emission spectra of PerCP.

HLA-DR Antibody is a Mouse Monoclonal against HLA-DR.

Target: HLA-DR Antigens-Associated Invariant Chain (HLA-DR)

Clonality: Monoclonal

Clone: MEM-12

Reactivity: Human

Tested Applications: FCM

Host: Mouse

Recommended dilutions: FCM: 10 µl/100 µl of whole blood or 10⁶ cells. Optimal dilutions/concentrations should be determined by the end user.

Conjugation: PerCP

Excitation/Emission: 480/675

Laser Line: 488

Datasheet

Version: 2.0.0

Revision date: 30 Sep 2025



Immunogen: thymocyte membrane.

Isotype: IgG₁

Storage: Store in the dark at 2-8°C. Avoid exposure to light. Do not freeze.

Buffer: Stabilizing PBS solution containing 15 mM sodium azide.

Specificity: The antibody recognizes common epitope on human HLA-DR which is dependent on the association of alpha and beta chains. DR is the isotype of human MHC Class II molecules expressed on antigen-presenting cells (APC; dendritic cells, B lymphocytes, monocytes, macrophages).

Note: THIS PRODUCT IS FOR RESEARCH USE ONLY. NOT FOR USE IN DIAGNOSTIC, THERAPEUTIC OR COSMETIC PROCEDURES. NOT FOR HUMAN OR ANIMAL CONSUMPTION.

For Reference Only