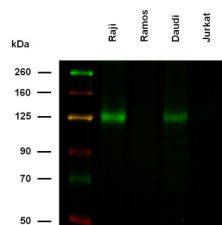


B-Cell Receptor CD22 / SIGLEC2 (CD22) Antibody

Catalogue No.: abx139202



— CD22 WB analysis of various whole cell extracts, using anti-CD22 antibody.

CD22 Antibody is a Mouse Monoclonal against CD22.

Target:	B-Cell Receptor CD22 / SIGLEC2 (CD22)
Clonality:	Monoclonal
Clone:	X902
Reactivity:	Human, Monkey
Tested Applications:	WB, FCM, IP
Host:	Mouse
Recommended dilutions:	FCM: 2-4 µg/ml, WB: 1-2 µg/ml. Optimal dilutions/concentrations should be determined by the end user.
Conjugation:	Unconjugated
Immunogen:	Raji Burkitt's lymphoma cell line.
Isotype:	IgG ₁
Purity:	> 95% (SDS-PAGE)
Purification:	Purified by Protein A affinity chromatography.
Storage:	Store at 2-8°C. Do not freeze.
UniProt Primary AC:	P20273 (UniProt , ExPASy)
Gene Symbol:	CD22

Datasheet

Version: 2.0.0
Revision date: 28 Jun 2025



GeneID: [933](#)

Buffer: PBS solution with 15 mM sodium azide.

Specificity: The antibody reacts with CD22 (BL-CAM), a 130 kDa type I transmembrane glycoprotein (immunoglobulin superfamily) expressed in the cytoplasm of pro-B and pre-B lymphocytes, and on the surface of mature and activated B lymphocytes; it is lost on plasma cells, peripheral blood T lymphocytes, granulocytes and monocytes.
The antibody cross-blocks the antibody OTH228 that recognizes uniquely epitope "E"; it does not cross-block antibodies RFB-4, CLB22/1 and CLB-BLy1.

Concentration: 1 mg/ml

Note: THIS PRODUCT IS FOR RESEARCH USE ONLY. NOT FOR USE IN DIAGNOSTIC, THERAPEUTIC OR COSMETIC PROCEDURES. NOT FOR HUMAN OR ANIMAL CONSUMPTION.

For Reference Only