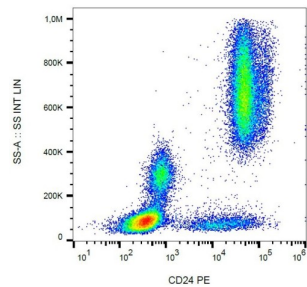
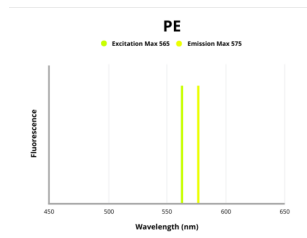


Cluster of Differentiation 24 (CD24) Antibody (PE)

Catalogue No.:abx140179



Surface staining of human peripheral blood cells with anti-human CD24 PE.



Fluorescence emission spectra of PE.

CD24 Antibody is a Mouse Monoclonal against CD24.

Target: Cluster of Differentiation 24 (CD24)

Clonality: Monoclonal

Clone: F986

Reactivity: Human

Tested Applications: FCM

Host: Mouse

Recommended dilutions: FCM: 20 µl/100 µl of whole blood or 10⁶ cells. Validated in IHC-F. Optimal dilutions/concentrations should be determined by the end user. The content of a vial (2 ml) is sufficient for 100 tests.

Conjugation: PE

Excitation/Emission: 565/575

Laser Line: 550

Immunogen: Glycoproteins purified from Human NALM-1 cell line.

Datasheet

Version: 3.0.0
Revision date: 13 Aug 2025



Isotype:	IgG ₁
Storage:	Store in the dark at 2-8°C. Avoid exposure to light. Do not freeze.
UniProt Primary AC:	P25063 (UniProt , ExPASy)
Gene Symbol:	CD24
GeneID:	100133941
KEGG:	hsa:100133941
String:	9606.ENSP00000483985
Buffer:	Stabilizing PBS solution containing 15 mM sodium azide.
Specificity:	The antibody reacts with CD24, a 35-45 kDa heavily glycosylated cell surface antigen. CD24 is expressed by granulocytes, B lymphocytes and by some activated T cells and T cell malignancies. It is not expressed on human thymocytes.
Note:	THIS PRODUCT IS FOR RESEARCH USE ONLY. NOT FOR USE IN DIAGNOSTIC, THERAPEUTIC OR COSMETIC PROCEDURES. NOT FOR HUMAN OR ANIMAL CONSUMPTION.