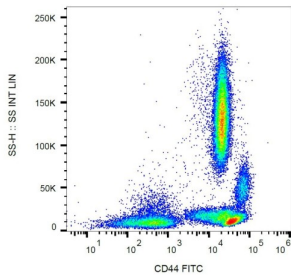
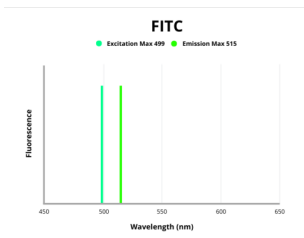


CD44 Antigen (CD44) Antibody (FITC)

Catalogue No.:abx139281



Surface staining of human peripheral blood with CD44 Antibody (FITC).



Fluorescence emission spectra of FITC.

CD44 Antibody is a Mouse Monoclonal against CD44.

Target: CD44 Antigen (CD44)

Clonality: Monoclonal

Clone: Y259

Reactivity: Human

Tested Applications: FCM

Host: Mouse

Recommended dilutions: FCM: 20 µl/100 µl of whole blood or 10⁶ cells. Optimal dilutions/concentrations should be determined by the end user. The content of a vial (2 ml) is sufficient for 100 tests.

Conjugation: FITC

Excitation/Emission: 499/515

Laser Line: 488

Immunogen: Leukocytes of a patient suffering from LGL Type Leukaemia.

Datasheet

Version: 5.0.0
Revision date: 04 Aug 2025



Isotype:	IgG _{2b}
Storage:	Store in the dark at 2-8°C. Avoid exposure to light. Do not freeze.
UniProt Primary AC:	P16070 (UniProt , ExPASy)
Gene Symbol:	CD44
GeneID:	960
Buffer:	Stabilizing PBS solution containing 15 mM sodium azide.
Specificity:	The antibody reacts with both cell surface-expressed and soluble form of CD44 antigen (Phagocyte glycoprotein 1), a 80-95 kDa transmembrane glycoprotein (hyaladherin family) present on the most of cells and tissues (leukocytes, endothelial cells, mesenchymal cells, etc.); it is negative on platelets and hepatocytes.
Note:	THIS PRODUCT IS FOR RESEARCH USE ONLY. NOT FOR USE IN DIAGNOSTIC, THERAPEUTIC OR COSMETIC PROCEDURES. NOT FOR HUMAN OR ANIMAL CONSUMPTION.

For Reference Only