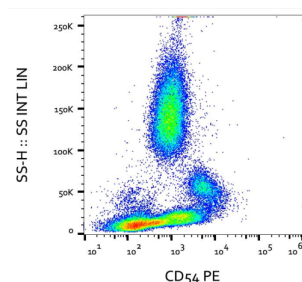


## Intercellular Adhesion Molecule 1 (ICAM1) Antibody

Catalogue No.: abx139531



Flow cytometry analysis (surface staining) of CD54 expression in activated human peripheral blood with CD54 Antibody (PE).

CD54 Antibody is a Mouse Monoclonal against CD54.

|                               |   |
|-------------------------------|---|
| <b>Target:</b>                | Intercellular Adhesion Molecule 1 (ICAM1)   |
| <b>Clonality:</b>             | Monoclonal  |
| <b>Clone:</b>                 | A817  |
| <b>Reactivity:</b>            | Human, Rat, Cow   |
| <b>Tested Applications:</b>   | ELISA, WB, IHC, FCM   |
| <b>Host:</b>                  | Mouse   |
| <b>Recommended dilutions:</b> | WB (Non-reducing): 1-2 µg/ml, IHC-P: 10 µg/ml, FCM: 0.5-4 µg/ml. Optimal dilutions/concentrations should be determined by the end user. |
| <b>Conjugation:</b>           | Unconjugated  |
| <b>Immunogen:</b>             | Raji Human Burkitt's lymphoma cell line.  |
| <b>Isotype:</b>               | IgG <sub>2a</sub>   |
| <b>Purity:</b>                | > 95% (SDS-PAGE)  |
| <b>Purification:</b>          | Purified by Protein A affinity chromatography.  |
| <b>Storage:</b>               | Store at 2-8°C. Do not freeze.  |
| <b>UniProt Primary AC:</b>    | P05362 ( <a href="#">UniProt</a> , <a href="#">ExPASy</a> )   |
| <b>Gene Symbol:</b>           | ICAM1   |

# Datasheet

Version: 2.0.0  
Revision date: 09 Apr 2025



|                       |  |
|-----------------------|--|
| <b>GeneID:</b>        | <a href="#">3383</a>   |
| <b>KEGG:</b>          | hsa:3383   |
| <b>String:</b>        | <a href="#">9606.ENSP00000264832</a>   |
| <b>Buffer:</b>        | PBS solution with 15 mM sodium azide.  |
| <b>Specificity:</b>   | The antibody reacts with CD54 (ICAM-1), a 85-110 kDa type I transmembrane glycoprotein (receptor for rhinovirus). The expression of CD54 is upregulated by activation; it is expressed on activated endothelial cells, T lymphocytes, B lymphocytes, monocytes, macrophages, granulocytes and dendritic cells. |
| <b>Concentration:</b> | 1 mg/ml  |
| <b>Note:</b>          | THIS PRODUCT IS FOR RESEARCH USE ONLY. NOT FOR USE IN DIAGNOSTIC, THERAPEUTIC OR COSMETIC PROCEDURES. NOT FOR HUMAN OR ANIMAL CONSUMPTION.   |

For Reference Only