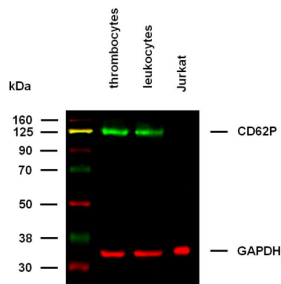
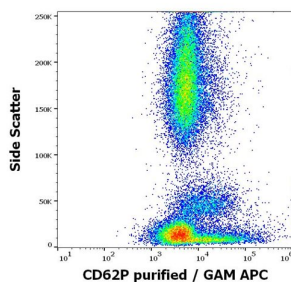


P-Selectin (SELP) Antibody

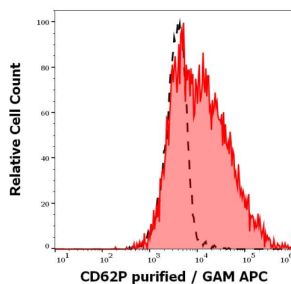
Catalogue No.: abx139862



WB analysis of thrombocytes (1), leukocytes (2) and Jurkat cells (3) under reducing conditions with P-Selectin (SELP) antibody, 2 µg/ml, and secondary goat anti-mouse antibody, 0.1 µg/ml. Estimated band size 125 kDa in thrombocytes and leukocytes.



Flow cytometry analysis of human peripheral whole blood, using SELP antibody, 0.56 µg/ml.



Flow cytometry analysis of human peripheral whole blood, showing separation of lymphocytes (red) from nblood debris (black) using SELP antibody, 0.56 µg/ml.

CD62P Antibody is a Mouse Monoclonal against CD62P.

Target: P-Selectin (SELP)

Clonality: Monoclonal

Clone: T192

Reactivity: Human

Tested Applications: WB, FCM

Host: Mouse

Recommended dilutions: WB: 1-2µg/ml. FCM: 1-5 µg/ml. Optimal dilutions/concentrations should be determined by the end user.

Datasheet

Version: 1.0.0
Revision date: 15 Jul 2025



Conjugation:	Unconjugated
Immunogen:	Human platelets.
Isotype:	IgG ₁
Purity:	> 95% (SDS-PAGE)
Purification:	Purified by Protein A affinity chromatography.
Storage:	Store at 2-8°C. Do not freeze.
UniProt Primary AC:	P16109 (UniProt , ExPASy)
Gene Symbol:	SELP
GeneID:	6403
KEGG:	hsa:6403
String:	9606.ENSP00000263686
Buffer:	PBS solution with 15 mM sodium azide.
Specificity:	The antibody recognizes CD62P (P-selectin), a 140 kD single chain type I transmembrane glycoprotein present in secretory alpha-granules in platelets, in Weibel-Palade bodies in endothelial cells and in megakaryocytes; it is relocated to the plasma membrane upon activation.
Concentration:	1 mg/ml
Note:	THIS PRODUCT IS FOR RESEARCH USE ONLY. NOT FOR USE IN DIAGNOSTIC, THERAPEUTIC OR COSMETIC PROCEDURES. NOT FOR HUMAN OR ANIMAL CONSUMPTION.