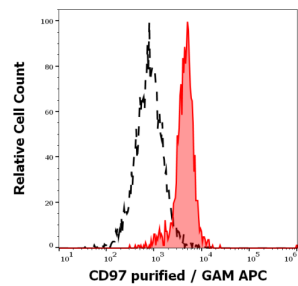
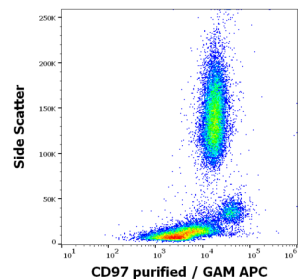


Adhesion G Protein-Coupled Receptor E5 (ADGRE5) Antibody

Catalogue No.: abx139344



Flow cytometry analysis of Human peripheral whole blood using Adhesion G Protein-Coupled Receptor E5 (ADGRE5) antibody (0.56 µg/ml) with a secondary Goat anti-Mouse antibody conjugated to APC.



Flow cytometry analysis of Human peripheral whole blood using Adhesion G Protein-Coupled Receptor E5 (ADGRE5) antibody (0.56 µg/ml) with a secondary Goat anti-Mouse antibody conjugated to APC.

Adhesion G Protein-Coupled Receptor E5 (ADGRE5) Antibody is a Mouse Monoclonal against Adhesion G Protein-Coupled Receptor E5 (ADGRE5).

Target: Adhesion G Protein-Coupled Receptor E5 (ADGRE5)

Clonality: Monoclonal

Clone: H136

Reactivity: Human

Tested Applications: FCM, IP

Host: Mouse

Recommended dilutions: Optimal dilutions/concentrations should be determined by the end user.

Conjugation: Unconjugated

Immunogen: PHA-activated peripheral blood cells.

Isotype: IgG₁

Datasheet

Version: 3.0.0
Revision date: 09 Apr 2025



Purity:	> 95% (SDS-PAGE)
Purification:	Purified by Protein A affinity chromatography.
Storage:	Store at 2-8°C. Do not freeze.
UniProt Primary AC:	P48960 (UniProt , ExPASy)
Gene Symbol:	ADGRE5
GeneID:	976
KEGG:	hsa:976
String:	9606.ENSP00000242786
Buffer:	PBS solution with 15 mM sodium azide.
Specificity:	The antibody recognizes an unique epitope on CD97, a 75-85 kDa surface glycoprotein of G-protein-coupled receptor family, expressed on activated B and T lymphocytes, monocytes/macrophages, dendritic cells and granulocytes.
Concentration:	1 mg/ml
Note:	THIS PRODUCT IS FOR RESEARCH USE ONLY. NOT FOR USE IN DIAGNOSTIC, THERAPEUTIC OR COSMETIC PROCEDURES. NOT FOR HUMAN OR ANIMAL CONSUMPTION.