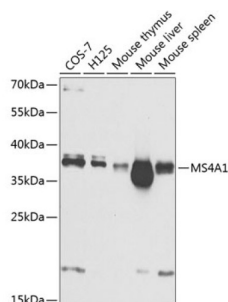


## B-Lymphocyte Antigen CD20 (MS4A1) Antibody

Catalogue No.: abx001485



Western blot analysis of extracts of various cell lines using MS4A1 Antibody (1/1000 dilution).

MS4A1 Antibody is a Rabbit Polyclonal antibody against MS4A1. This gene encodes a member of the membrane-spanning 4A gene family. Members of this nascent protein family are characterized by common structural features and similar intron/exon splice boundaries and display unique expression patterns among hematopoietic cells and nonlymphoid tissues. This gene encodes a B-lymphocyte surface molecule which plays a role in the development and differentiation of B-cells into plasma cells. This family member is localized to 11q12, among a cluster of family members. Alternative splicing of this gene results in two transcript variants which encode the same protein.

**Target:** B-Lymphocyte Antigen CD20 (MS4A1)

**Clonality:** Polyclonal

**Reactivity:** Human, Mouse

**Tested Applications:** WB

**Host:** Rabbit

**Recommended dilutions:** WB: 1/500 - 1/2000. Optimal dilutions/concentrations should be determined by the end user.

**Conjugation:** Unconjugated

**Immunogen:** Recombinant fusion protein corresponding to human MS4A1

**Isotype:** IgG

**Form:** Liquid

**Purification:** Purified by affinity chromatography.

**Storage:** Aliquot and store at -20°C. Avoid repeated freeze/thaw cycles.

**UniProt Primary AC:** P11836 ([UniProt](#), [ExPASy](#))

# Datasheet

Version: 3.0.0

Revision date: 09 Jun 2025



**Gene Symbol:** MS4A1

**GeneID:** [931](#)

**NCBI Accession:** NP\_068769.2

**KEGG:** hsa:931

**String:** [9606.ENSP00000314620](#)

**Molecular Weight:** Calculated MW: 14 kDa/33 kDa  
Observed MW: 37 kDa

**Buffer:** PBS, pH 7.3, containing 0.02% sodium azide, 50% glycerol.

**Concentration:** 1 mg/ml

**Note:** THIS PRODUCT IS FOR RESEARCH USE ONLY. NOT FOR USE IN DIAGNOSTIC, THERAPEUTIC OR COSMETIC PROCEDURES. NOT FOR HUMAN OR ANIMAL CONSUMPTION.

For Reference Only