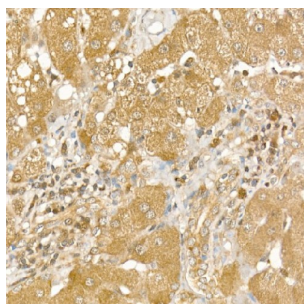
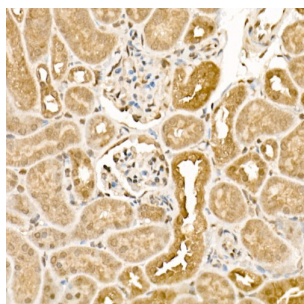


Casein Kinase I Isoform Epsilon (CSNK1E) Antibody

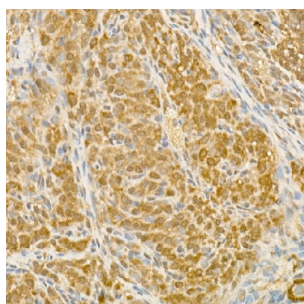
Catalogue No.: abx001488



Immunohistochemistry of paraffin-embedded human liver using [KO Validated] CSNK1E Antibody (1/200 dilution, 40x lens). High pressure antigen retrieval was performed in 10 mM citrate buffer pH 6.0 before commencing with IHC staining protocol.



Immunohistochemistry of paraffin-embedded mouse kidney using [KO Validated] CSNK1E Antibody (1/200 dilution, 40x lens). High pressure antigen retrieval was performed in 10 mM citrate buffer pH 6.0 before commencing with IHC staining protocol.



Immunohistochemistry of paraffin-embedded rat ovary using [KO Validated] CSNK1E Antibody (1/200 dilution, 40x lens). High pressure antigen retrieval was performed in 10 mM citrate buffer pH 6.0 before commencing with IHC staining protocol.

CSNK1E Antibody is a Rabbit Polyclonal antibody against CSNK1E. The protein encoded by this gene is a serine/threonine protein kinase and a member of the casein kinase I protein family, whose members have been implicated in the control of cytoplasmic and nuclear processes, including DNA replication and repair. The encoded protein is found in the cytoplasm as a monomer and can phosphorylate a variety of proteins, including itself. This protein has been shown to phosphorylate period, a circadian rhythm protein. Two transcript variants encoding the same protein have been found for this gene.

Target: Casein Kinase I Isoform Epsilon (CSNK1E)

Clonality: Polyclonal

Reactivity: Human

Tested Applications: IHC

Host: Rabbit

Datasheet

Version: 5.0.0
Revision date: 18 Aug 2025



Recommended dilutions: IHC-P: 1/50 - 1/200. Not tested in IHC-F. Optimal dilutions/concentrations should be determined by the end user.

Conjugation: Unconjugated

Immunogen: Recombinant fusion protein corresponding to human CSNK1E

Isotype: IgG

Form: Liquid

Purification: Purified by affinity chromatography.

Storage: Aliquot and store at -20°C. Avoid repeated freeze/thaw cycles.

UniProt Primary AC: P49674 ([UniProt](#), [ExPASy](#))

Gene Symbol: CSNK1E

GenelD: [1454](#)

NCBI Accession: NP_689407.1

KEGG: hsa:102800317, hsa:1454

String: [9606.ENSP00000380044](#)

Molecular Weight: Calculated MW: 47 kDa

Buffer: PBS, pH 7.3, containing 0.02% sodium azide, 50% glycerol.

Concentration: 1 mg/ml

Note: THIS PRODUCT IS FOR RESEARCH USE ONLY. NOT FOR USE IN DIAGNOSTIC, THERAPEUTIC OR COSMETIC PROCEDURES. NOT FOR HUMAN OR ANIMAL CONSUMPTION.