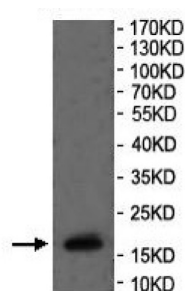
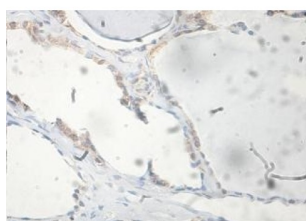


## Family With Sequence Similarity 72 Member A (FAM72A) Antibody

Catalogue No.: abx145553



WB analysis of HEK-293 cell lysate, using FAM72A antibody (1/500 dilution).



IHC-P analysis of Human thyroid tissue FAM72A antibody (1/100 dilution), showing membrane staining.

FAM72A Antibody is a Rabbit Polyclonal against FAM72A.

<b>Target:</b>	Family With Sequence Similarity 72 Member A (FAM72A)
<b>Clonality:</b>	Polyclonal
<b>Reactivity:</b>	Human
<b>Tested Applications:</b>	ELISA, WB, IHC, IF/ICC
<b>Host:</b>	Rabbit
<b>Recommended dilutions:</b>	ELISA: 1/20000 - 1/80000, WB: 1/500-1/2000, IHC: 1/100 - 1/200, IF/ICC: 1/100 - 1/200. Optimal dilutions/concentrations should be determined by the end user.
<b>Conjugation:</b>	Unconjugated
<b>Immunogen:</b>	Recombinant fragment corresponding to 2-148 AA of Human FAM72A.
<b>Isotype:</b>	IgG
<b>Form:</b>	Lyophilized
<b>Purification:</b>	Purified by antigen affinity column chromatography.

# Datasheet

Version: 7.0.0  
Revision date: 02 Jun 2025



<b>Reconstitution:</b>	Reconstitute in 100 µl of sterile distilled H <sub>2</sub> O with 50% glycerol.
<b>Storage:</b>	Store at -20 °C. Avoid repeated freeze/thaw cycles.
<b>Gene Symbol:</b>	FAM72A
<b>NCBI Accession:</b>	BC035696
<b>Molecular Weight:</b>	Observed MW: 17 kDa (Recombinant Protein)
<b>Sequence Fragment:</b>	2-148 AA
<b>Buffer:</b>	Prior to lyophilization: 1% BSA and 0.02% NaN <sub>3</sub> .
<b>Specificity:</b>	Predicted to react with Mouse and Rat FAM72A.
<b>Concentration:</b>	Lyophilized form: Not applicable. After reconstitution: 1 mg/ml.
<b>Note:</b>	THIS PRODUCT IS FOR RESEARCH USE ONLY. NOT FOR USE IN DIAGNOSTIC, THERAPEUTIC OR COSMETIC PROCEDURES. NOT FOR HUMAN OR ANIMAL CONSUMPTION.

For Reference Only