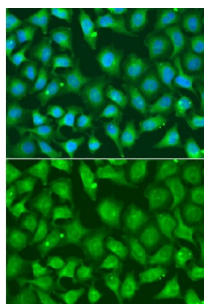


X-Ray Repair Cross-Complementing Protein 2 (XRCC2) Antibody

Catalogue No.: abx001491



Immunofluorescence analysis of A549 cells using XRCC2 Antibody

XRCC2 Antibody is a Rabbit Polyclonal antibody against XRCC2. This gene encodes a member of the RecA/Rad51-related protein family that participates in homologous recombination to maintain chromosome stability and repair DNA damage. This gene is involved in the repair of DNA double-strand breaks by homologous recombination and it functionally complements Chinese hamster irs1, a repair-deficient mutant that exhibits hypersensitivity to a number of different DNA-damaging agents. [provided by RefSeq, Jul 2008].

Target: X-Ray Repair Cross-Complementing Protein 2 (XRCC2)

Clonality: Polyclonal

Reactivity: Human

Tested Applications: IF/ICC

Host: Rabbit

Recommended dilutions: IF/ICC: 1/50 - 1/200. Optimal dilutions/concentrations should be determined by the end user.

Conjugation: Unconjugated

Immunogen: Recombinant fusion protein corresponding to human XRCC2

Isotype: IgG

Form: Liquid

Purification: Purified by affinity chromatography.

Storage: Aliquot and store at -20°C. Avoid repeated freeze/thaw cycles.

UniProt Primary AC: O43543 ([UniProt](#), [ExPASy](#))

Datasheet

Version: 5.0.0

Revision date: 06 Sep 2025



Gene Symbol: XRCC2

GeneID: [7516](#)

NCBI Accession: NP_005422.1

KEGG: hsa:7516

String: [9606.ENSP00000352271](#)

Buffer: PBS, pH 7.3, containing 0.02% sodium azide, 50% glycerol.

Concentration: 1 mg/ml

Note: THIS PRODUCT IS FOR RESEARCH USE ONLY. NOT FOR USE IN DIAGNOSTIC, THERAPEUTIC OR COSMETIC PROCEDURES. NOT FOR HUMAN OR ANIMAL CONSUMPTION.

For Reference Only