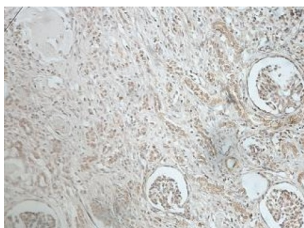


Regulating Synaptic Membrane Exocytosis Protein 2 (RIMS2) Antibody

Catalogue No.: abx145072



Immunohistochemical staining of formalin-fixed paraffin-embedded fetal kidney showing cytoplasmic staining with anti-RIMS2 antibody

Immunohistochemistry analysis of paraffin-embedded fetal kidney using Regulating Synaptic Membrane Exocytosis Protein 2 (RIMS2) Antibody.

Regulating Synaptic Membrane Exocytosis Protein 2 (RIMS2) Antibody is a Rabbit Polyclonal antibody for the detection of RIMS2.

Target:	Regulating Synaptic Membrane Exocytosis Protein 2 (RIMS2)
Clonality:	Polyclonal
Reactivity:	Human
Tested Applications:	ELISA, WB, IHC
Host:	Rabbit
Recommended dilutions:	ELISA: 1/20000 - 1/80000, WB: 1/500 - 1/2000, IHC: 1/100 - 1/200. Optimal dilutions/concentrations should be determined by the end user.
Conjugation:	Unconjugated
Immunogen:	Recombinant fragment corresponding to 982-1147 AA of Human Regulating Synaptic Membrane Exocytosis Protein 2 (RIMS2).
Isotype:	IgG
Form:	Lyophilized
Purification:	Purified by antigen affinity column chromatography.
Reconstitution:	Reconstitute in 100 µl of sterile distilled H ₂ O with 50% glycerol.
Storage:	Store at -20 °C. Avoid repeated freeze/thaw cycles.
NCBI Accession:	BC043144

Datasheet

Version: 3.0.0

Revision date: 23 Aug 2025



Molecular Weight: Observed MW: 160 kDa

Buffer: Prior to lyophilization: 1% BSA and 0.02% NaN₃.

Specificity: Predicted to react with Mouse and Rat RIMS2.

Concentration: Lyophilized form: Not applicable.
After reconstitution: 1 mg/ml.

Note: THIS PRODUCT IS FOR RESEARCH USE ONLY. NOT FOR USE IN DIAGNOSTIC, THERAPEUTIC OR COSMETIC PROCEDURES. NOT FOR HUMAN OR ANIMAL CONSUMPTION.

For Reference Only